

LOC/DME I-OAJ <b>108.7</b> Chan <b>24</b>	APP CRS <b>052°</b>	Rwy Idg TDZE Apt Elev	<b>7100</b> <b>89</b> <b>93</b>
---	------------------------	-----------------------------	---------------------------------------

# ILS or LOC RWY 5

ALBERT J ELLIS (OAJ)

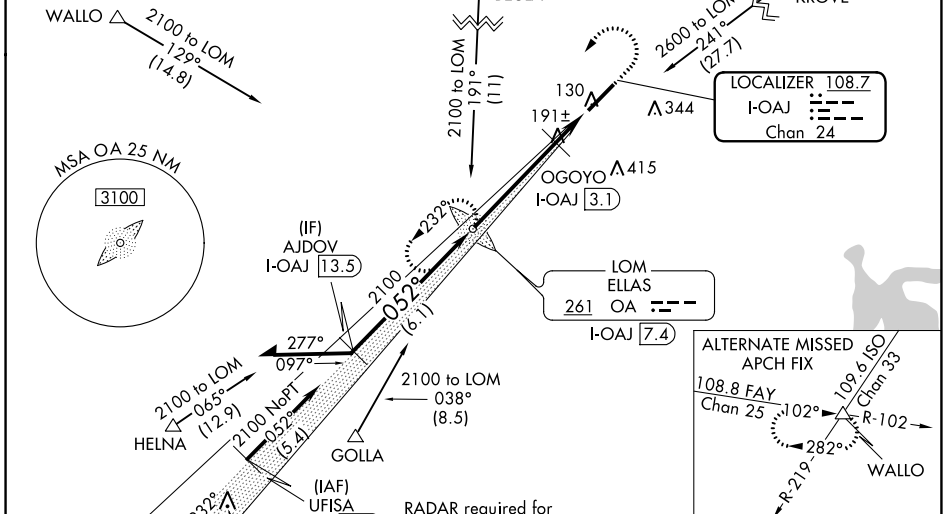
VDP NA with Wilmington altimeter setting. When local altimeter setting not received, use Wilmington altimeter setting and increase all DA to 382 feet; increase all MDAs 100 feet and visibility S-LOC 5 Cats C/D and Circling Cats C/D ¼ SM; OGOYO fix minimums: increase visibility S-LOC 5 Cats C/D ¾ SM and Circling Cats C/D ¼ SM. For inoperative MALSR, increase S-LOC 5 Cats C/D visibility to 1¾ mile, increase OGOYO fix minimums S-LOC 5 Cats C/D visibility to 1 mile. For inoperative MALSR when using Wilmington altimeter setting, increase S-ILS 5 all Cats visibility to ¾ mile, increase S-LOC 5 Cats C/D visibility to 1¾ mile, increase OGOYO fix minimums S-LOC 5 Cats C/D visibility to 1¾ mile. ADF required.

**MALSR**

**MISSED APPROACH:**  
Climb to 600 then climbing left turn to 2100 direct ELLAS LOM/I-OAJ 7.4 DME and hold.

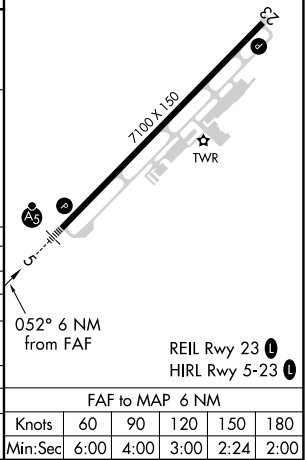
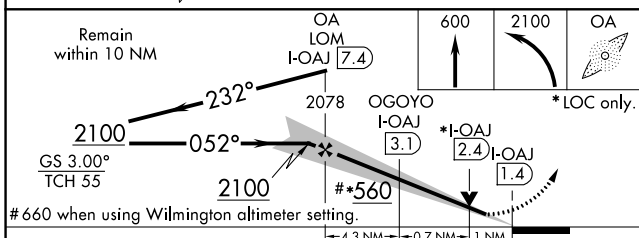
ATIS <b>124.475</b>	WILMINGTON APP CON ★ <b>135.75 317.425</b>	ELLIS TOWER ★ <b>132.65</b> (CTAF)	GND CON <b>125.4</b>	CLNC DEL <b>121.4 257.6</b> (when twr closed)	UNICOM <b>122.95</b>
------------------------	---	---------------------------------------	-------------------------	---	-------------------------

## ADF or DME REQUIRED



RADAR required for arrivals at UFISA.

ELEV 93	TDZE 89
---------	---------



CATEGORY	A	B	C	D
S-ILS 5	289-½ 200 (200-½)			
S-LOC 5	560-½	471 (500-½)	560-1	471 (500-1)
CIRCLING	560-1	467 (500-1)	720-1¾ 627 (700-1¾)	720-2 627 (700-2)
OGOYO FIX MINIMUMS (DME REQUIRED)				
S-LOC 5	460-½	371 (400-½)	460-¾	371 (400-¾)
CIRCLING	540-1 447 (500-1)	560-1 467 (500-1)	720-1¾ 627 (700-1¾)	720-2 627 (700-2)

FAF to MAP 6 NM					
Knots	60	90	120	150	180
Min:Sec	6:00	4:00	3:00	2:24	2:00

SE-2, 13 JUN 2024 to 11 JUL 2024

SE-2, 13 JUN 2024 to 11 JUL 2024