

WAAS CH <b>70540</b> <b>W03A</b>	APP CRS <b>026°</b>	Rwy Idg TDZE Apt Elev	<b>4771</b> <b>484</b> <b>485</b>
--	------------------------	-----------------------------	---

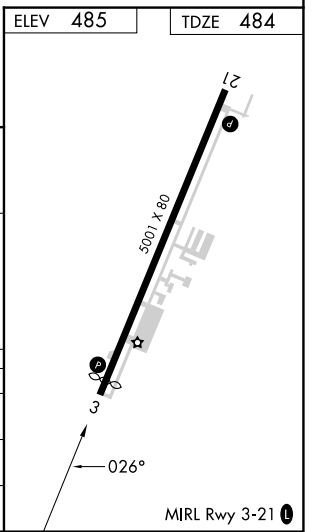
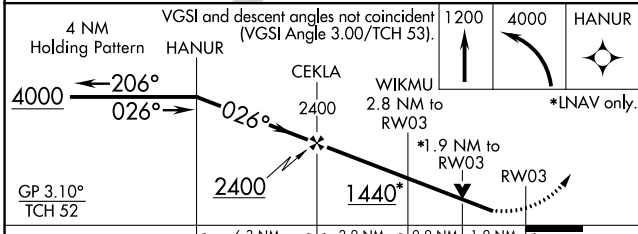
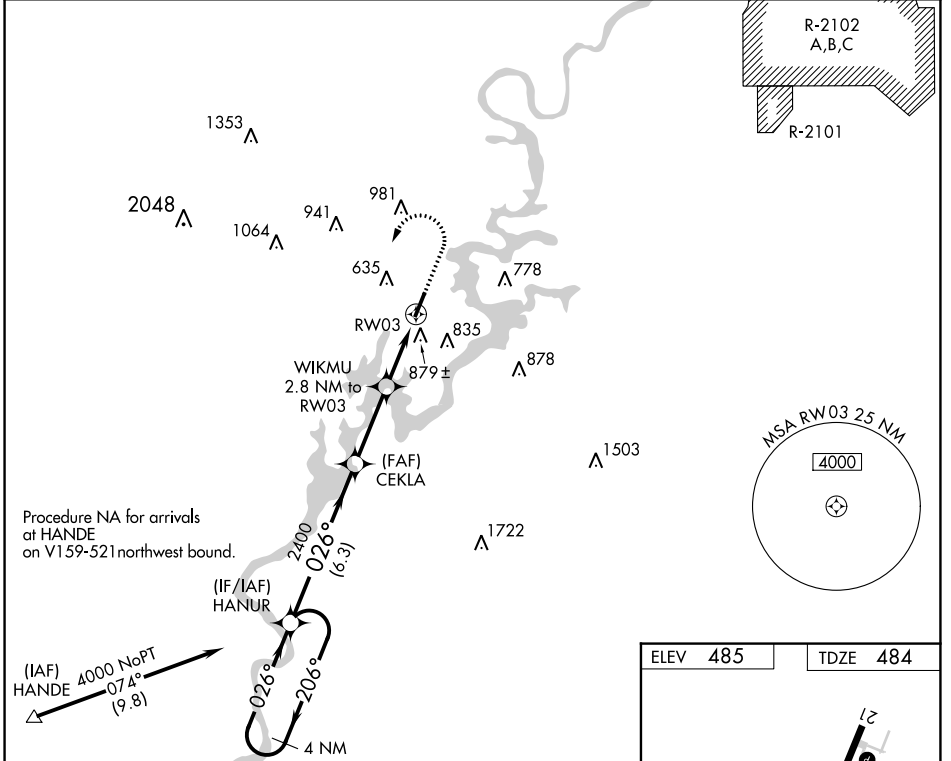
# RNAV (GPS) RWY 3

ST CLAIR COUNTY (PLR)

**⚠** DME/DME RNP-0.3 NA. VDP NA when using Anniston altimeter setting. Rwy 3, helicopter visibility reduction below 3/4 SM NA. When local altimeter setting not received, use Anniston altimeter setting and increase all DA 63 feet and all visibility 1/4 SM, increase all MDA 80 feet and LNAV Cat C/D visibility 1/8 SM and Circling Cat C/D 1/4 SM.

**⚠** MISSED APPROACH: Climb to 1200, then climbing left turn to 4000 direct HANUR and hold, continue climb-in-hold to 4000.

AWOS-3P <b>119.625</b>	BIRMINGHAM APP CON <b>123.8 256.8</b>	GCO <b>121.725</b>	UNICOM <b>123.05 (CTAF) 0</b>
---------------------------	--	-----------------------	----------------------------------



CATEGORY	A	B	C	D
LPV DA	835-1 1/8		351 (400-1 1/8)	
LNAV MDA	1140-1	656 (700-1)	1140-1 7/8	656 (700-1 7/8)
<b>C</b> CIRCLING	1180-1	695 (700-1)	1240-2 1/4 755 (800-2 1/4)	1340-2 3/4 855 (900-2 3/4)

SE-4, 13 JUN 2024 to 11 JUL 2024

SE-4, 13 JUN 2024 to 11 JUL 2024