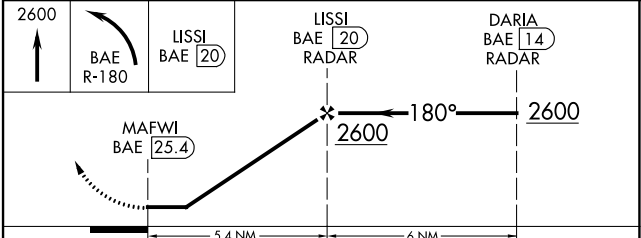
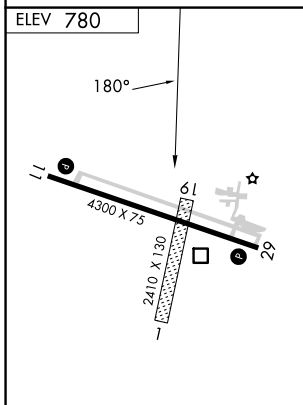
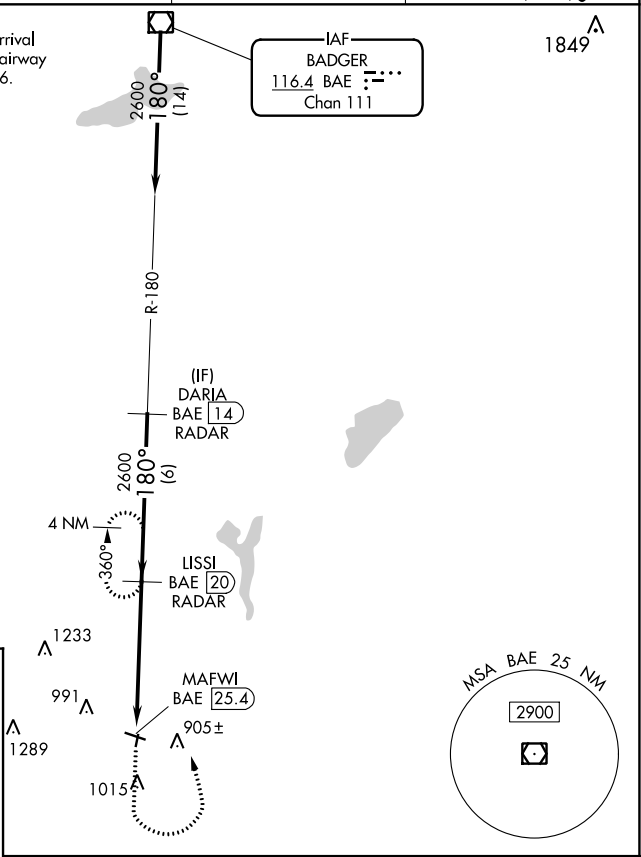


VOR/DME BAE 116.4 Chan 111	APP CRS 180°	Rwy Idg TDZE Apt Elev	N/A N/A 780
---	------------------------	-----------------------------	--

VOR-A
BURLINGTON MUNI (BUU)

DME or RADAR required.		MISSED APPROACH: Climb to 2600 then left turn on BAE VOR/DME R-180 to LISSI/20 DME/RADAR and hold.	
Circling NA to Rwy 1 and 19.		AWOS-3 125.275	MILWAUKEE APP CON 135.875 307.0
		GCO 121.725	UNICOM 123.05 (CTAF) 0

Procedure NA for arrival on BAE VOR/DME airway radials 119 CW 226.



MIRL Rwy 11-29
 REIL Rwy 11 and 29

	FAF to MAP 5.4 NM				
Knots	60	90	120	150	180
Min:Sec	5:24	3:36	2:42	2:10	1:48

CATEGORY	A	B	C	D
CIRCLING	1400-1	620 (700-1)	1400-1 ³ / ₄ 620 (700-1 ³ / ₄)	1560-2 ¹ / ₂ 780 (800-2 ¹ / ₂)

EC-3, 13 JUN 2024 to 11 JUL 2024

EC-3, 13 JUN 2024 to 11 JUL 2024