

WAAS CH <b>99604</b> <b>W23A</b>	APP CRS <b>230°</b>	Rwy Idg <b>6114</b> TDZE <b>1032</b> Apt Elev <b>1032</b>
--	------------------------	---

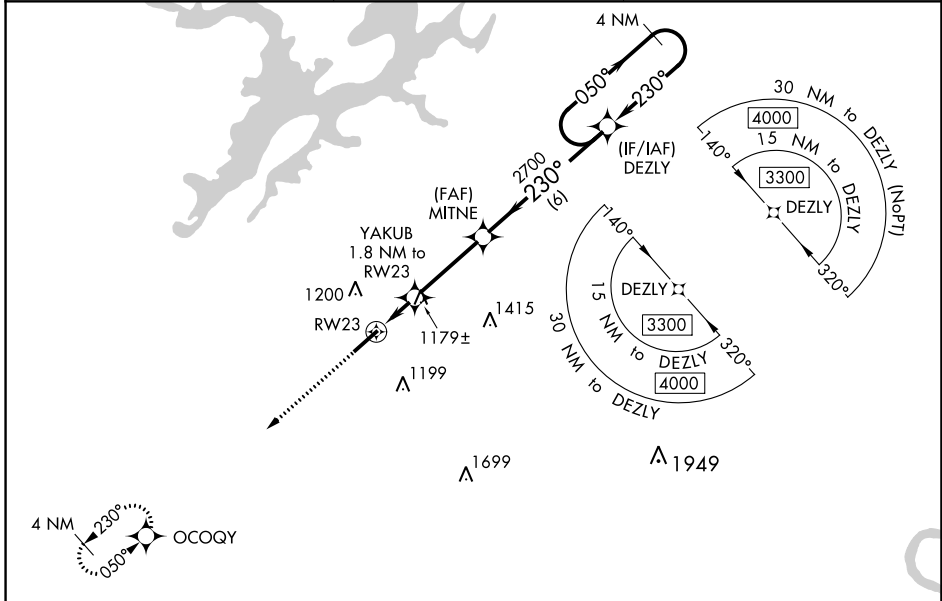
# RNAV (GPS) RWY 23

ALBARTVILLE RGNL/THOMAS J BRUMLIK FLD (8A0)

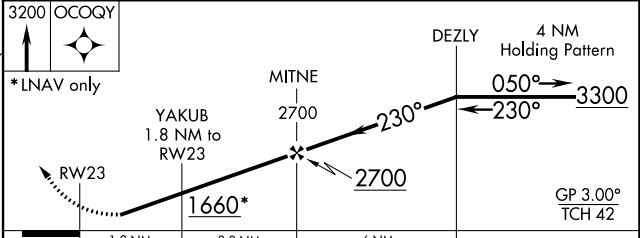
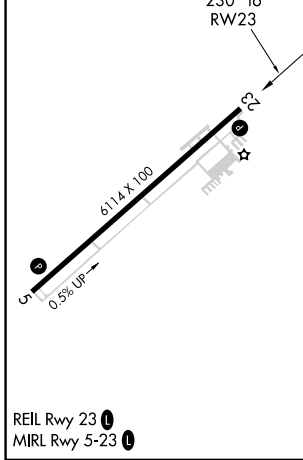
**⚠** DME/DME RNP-0.3 NA. When local altimeter setting not received, use Huntsville Intl-Carl T Jones Fld altimeter setting and increase all DA 139 feet and all MDA 140 feet; increase LPV all Cats visibility  $\frac{3}{8}$  mile. Increase LNAV/VNAV all Cats and LNAV Cats C and D visibility  $\frac{1}{2}$  mile. Increase Circling Cat C visibility  $\frac{1}{4}$  mile and Cat D  $\frac{1}{2}$  mile. For uncompensated Baro-VNAV systems, LNAV/VNAV NA below -17°C (2°F) or above 54°C (130°F). Baro-VNAV NA when using Huntsville Intl-Carl T Jones Fld altimeter setting. Helicopter visibility reduction below 1 SM NA.

**MISSED APPROACH:** Climb to 3200 direct to OCOQY and hold.

AWOS-3PT <b>119.575</b>	BIRMINGHAM APP CON <b>125.45 279.65</b>	UNICOM <b>123.0 (CTAF) 0</b>
----------------------------	--	---------------------------------



ELEV 1032	TDZE 1032
-----------	-----------



CATEGORY	A	B	C	D
LPV DA		1282-1	250 (300-1)	
LNAV/VNAV DA		1340-1	308 (400-1)	
LNAV MDA	1440-1	408 (500-1)	1440-1 $\frac{1}{8}$	408 (500-1 $\frac{1}{8}$ )
<b>C</b> CIRCLING	1480-1 448 (500-1)	1500-1 468 (500-1)	1500-1 $\frac{1}{2}$ 468 (500-1 $\frac{1}{2}$ )	1680-2 648 (700-2)

# RNAV (GPS) RWY 23

SE-4, 13 JUN 2024 to 11 JUL 2024

SE-4, 13 JUN 2024 to 11 JUL 2024