

WAAS CH <b>50319</b> <b>W27A</b>	APP CRS <b>271°</b>	Rwy Idg TDZE <b>13</b> Apt Elev <b>13</b>	<b>6002</b>
--	------------------------	---	-------------

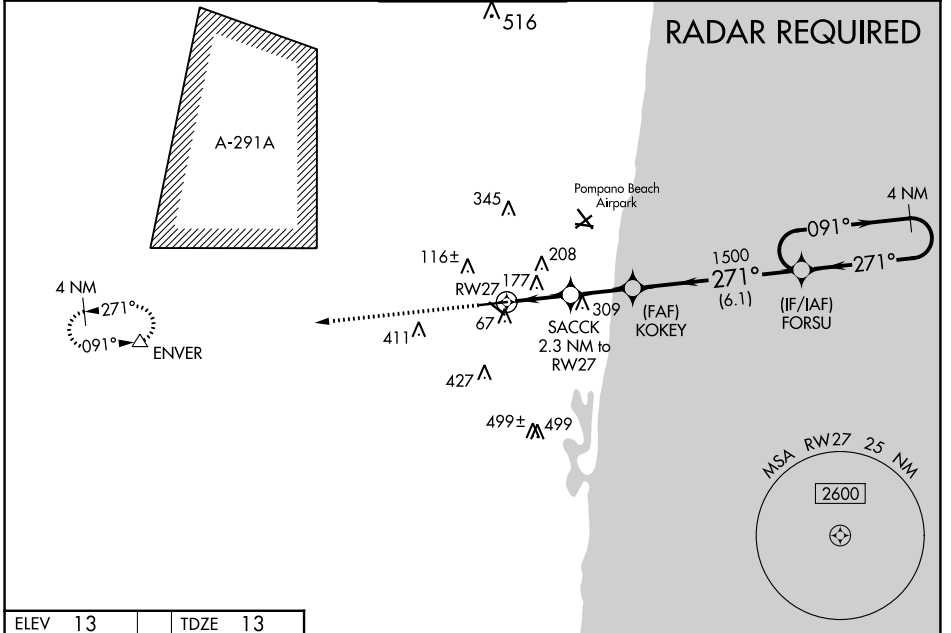
# RNAV (GPS) RWY 27

FORT LAUDERDALE EXEC (FXXE)

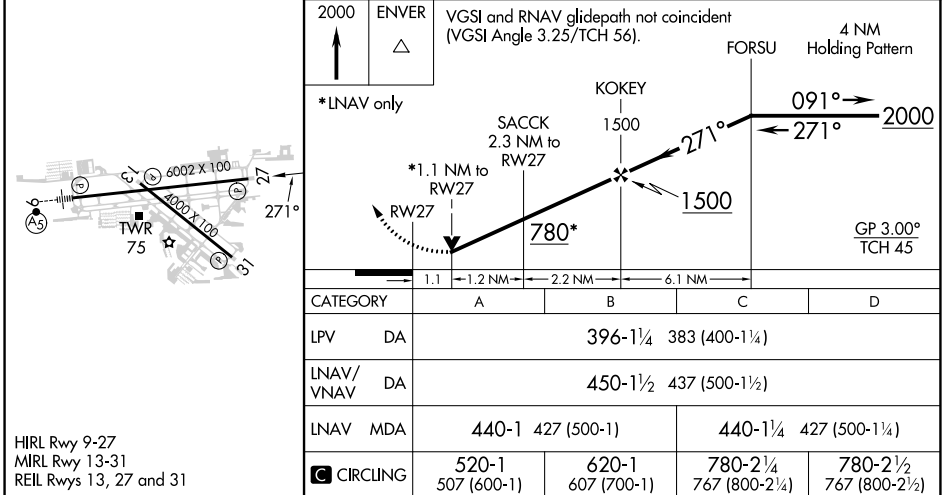
**⚠** For uncompensated Baro-VNAV systems, LNAV/VNAV NA below 4°C (40°F) or above 54°C (130°F).  
**⚠** DME/DME RNP-0.3 NA. When local altimeter setting not received, use Fort Lauderdale/Hollywood Intl altimeter setting and increase LPV DA to 414; LNAV/VNAV DA to 468. Increase all MDA 20 feet and increase LPV all Cats and LNAV Cats C/D visibility to 1/2. Baro-VNAV and VDP NA when using Fort Lauderdale/Hollywood Intl altimeter setting. Helicopter visibility reduction below 3/4 SM NA.

MISSED APPROACH: Climb to 2000 direct ENVER and hold.

ATIS <b>119.85</b>	MIAMI APP CON <b>119.7 306.3</b>	<b>EXECUTIVE TOWER</b> <b>120.9 239.3</b>	GND CON <b>121.75</b>	CLNC DEL <b>127.95</b>
-----------------------	-------------------------------------	--	--------------------------	---------------------------



ELEV <b>13</b>	TDZE <b>13</b>
----------------	----------------



SE-3, 13 JUN 2024 to 11 JUL 2024

SE-3, 13 JUN 2024 to 11 JUL 2024