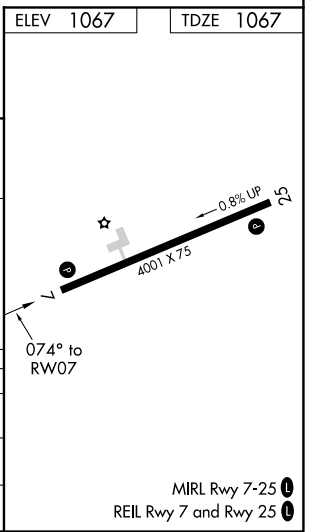
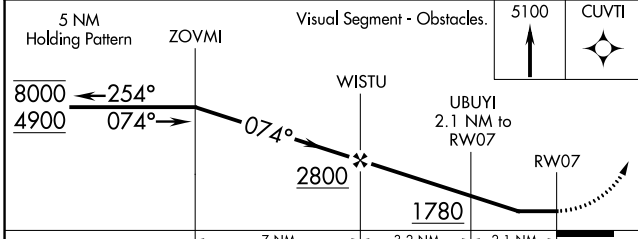
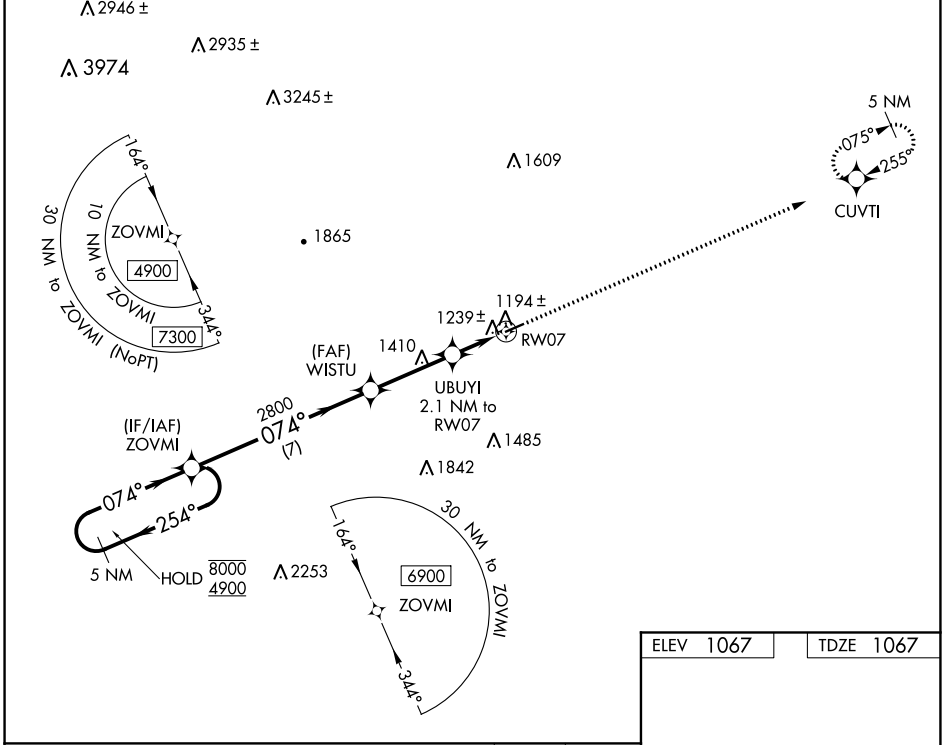


WAAS CH 65836 W07A	APP CRS 074°	Rwy Idg TDZE Apt Elev	4001 1067 1067
----------------------------------------	------------------------	-----------------------------	-------------------------------------------

RNAV (GPS) RWY 7

ELKIN MUNI (ZEF)

RNP APCH.	<p>Procedure NA at night. Obtain local altimeter setting on CTAF; when not received, use Mount Airy altimeter setting and increase all MDAs 80 feet and all Cats C/D visibilities ¼ SM. Rwy 7 helicopter visibility reduction below 1 SM NA.</p>	<p>MISSED APPROACH: Climb to 5100 direct CUVTI and hold, continue climb-in-hold to 5100.</p>
<p>ATLANTA CENTER 125.15 263.0</p>		<p>UNICOM 123.05 (CTAF)</p>



CATEGORY	A	B	C	D
LP MDA	1460-1	393 (400-1)	1460-1½	393 (400-1½)
LNAV MDA	1500-1	433 (500-1)	1500-1¼	433 (500-1¼)
CIRCLING	1540-1 473 (500-1)	1600-1 533 (600-1)	1680-1¾ 613 (700-1¾)	1840-2½ 773 (800-2½)

SE-2, 13 JUN 2024 to 11 JUL 2024

SE-2, 13 JUN 2024 to 11 JUL 2024