

RNAV (GPS) RWY 14

GRAYLING AAF (GOV)

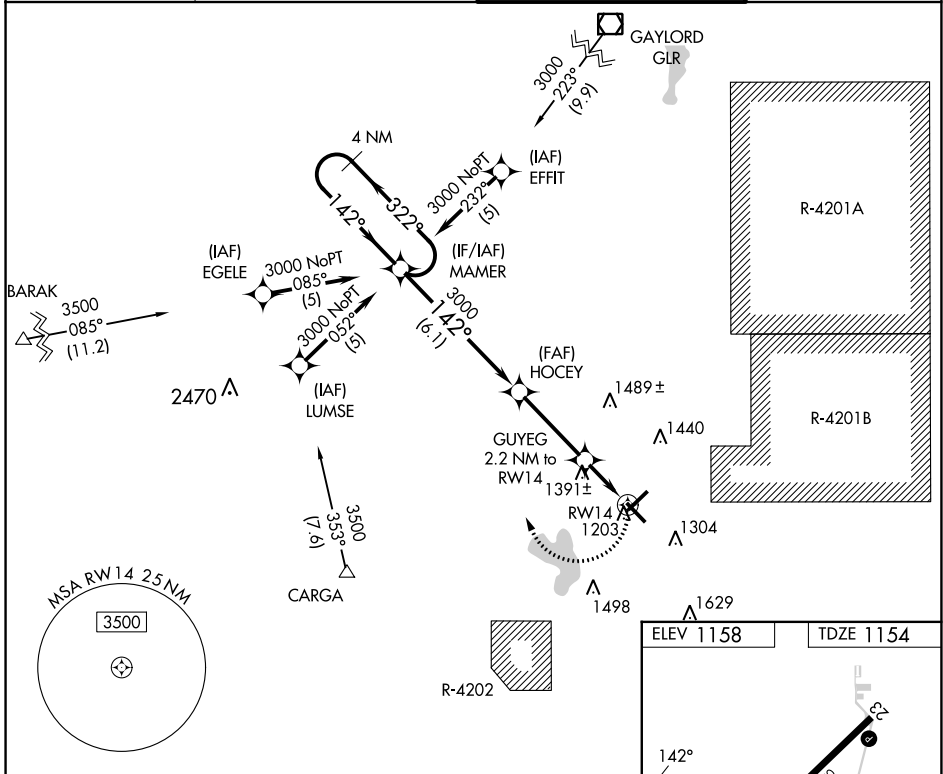
APP CRS	Rwy Idg	5005
142°	TDZE	1154
	Apt Elev	1158

RNP APCH.

- ⚠ Circling Rwy 5, 23, 32 NA at night. Rwy 14 helicopter visibility reduction below 3/4 SM NA.
- ⚠ When local altimeter setting not received, use Houghton Lake altimeter setting and increase all MDAs 60 feet and LNAV Cat C visibility 1/8 SM and Circling Cat D visibility 1/4 SM.

MISSED APPROACH:
Climbing right turn to 3000
direct MAMER and hold.

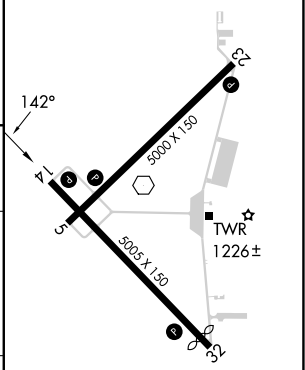
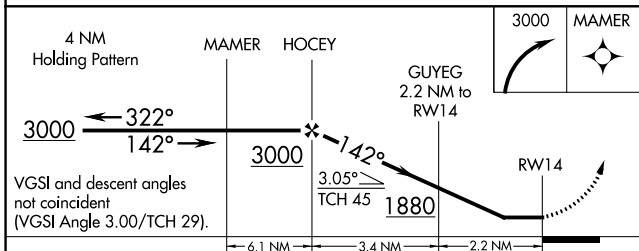
ATIS 119.075	MINNEAPOLIS CENTER 125.475 269.45	GRAYLING TOWER * 126.2 (CTAF) 0	GND CON 121.9
------------------------	---	---	-------------------------



EC-1, 13 JUN 2024 to 11 JUL 2024

EC-1, 13 JUN 2024 to 11 JUL 2024

ELEV 1158	TDZE 1154
-----------	-----------



CATEGORY	A	B	C	D
LNAV MDA	1700-1	546 (600-1)	1700-1 1/8 546 (600-1 1/8)	1700-1 3/4 546 (600-1 3/4)
CIRCLING	1720-1	562 (600-1)	1760-1 3/4 602 (700-1 3/4)	1960-2 1/2 802 (900-2 1/2)

REIL Rws 5, 23, 14 and 32 0
MIRL Rwy 5-23 and 14-32 0