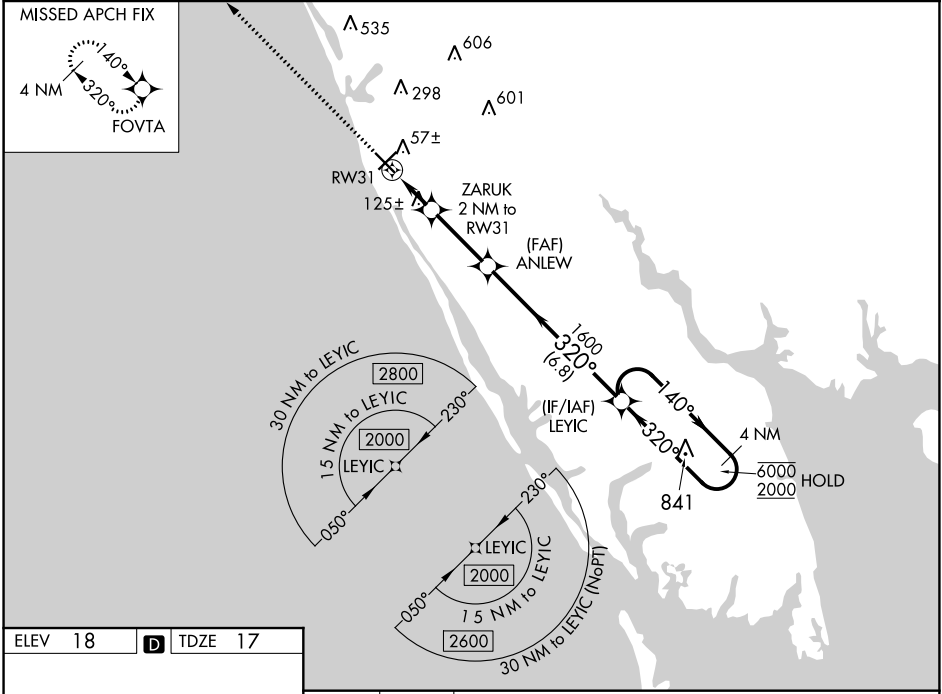


WAAS CH 78223 W31A	APP CRS 320°	Rwy Idg 5000 TDZE 17 Apt Elev 18
--	------------------------	---

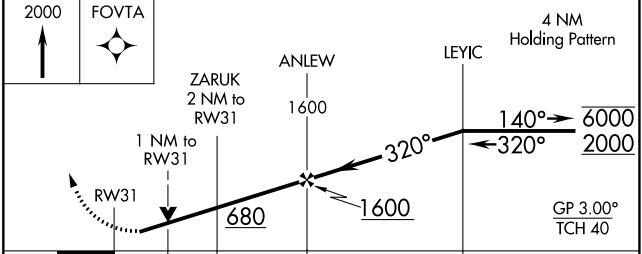
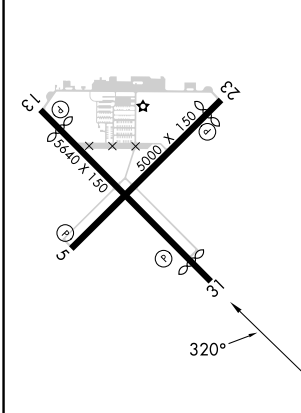
RNAV (GPS) RWY 31

VENICE MUNI (VNC)

RNP APCH - GPS.		MISSED APPROACH: Climb to 2000 direct FOVTA and hold.	
Rwy 31 helicopter visibility reduction below 3/4 SM NA. For uncompensated Baro-VNAV systems, LNAV/VNAV NA below -15°C or above 54°C.			
AWOS-3 119.275	TAMPA APP CON 119.65 353.575	CLNC DEL 118.075	UNICOM 122.725 (CTAF) 1



ELEV 18	D	TDZE 17
---------	----------	---------



CATEGORY	A	B	C	D
LPV DA		267-1	250 (300-1)	
LNAV/VNAV DA		296-1	279 (300-1)	
LNAV MDA		380-1	363 (400-1)	
CIRCLING	500-1	482 (500-1)	680-1 3/4 662 (700-1 3/4)	920-3 902 (1000-3)

MIRL Rwy 5-23 and 13-31 **1**
 REIL Rwy 5, 13 and 23 **1**
 REIL Rwy 31

SE-3, 13 JUN 2024 to 11 JUL 2024

SE-3, 13 JUN 2024 to 11 JUL 2024