

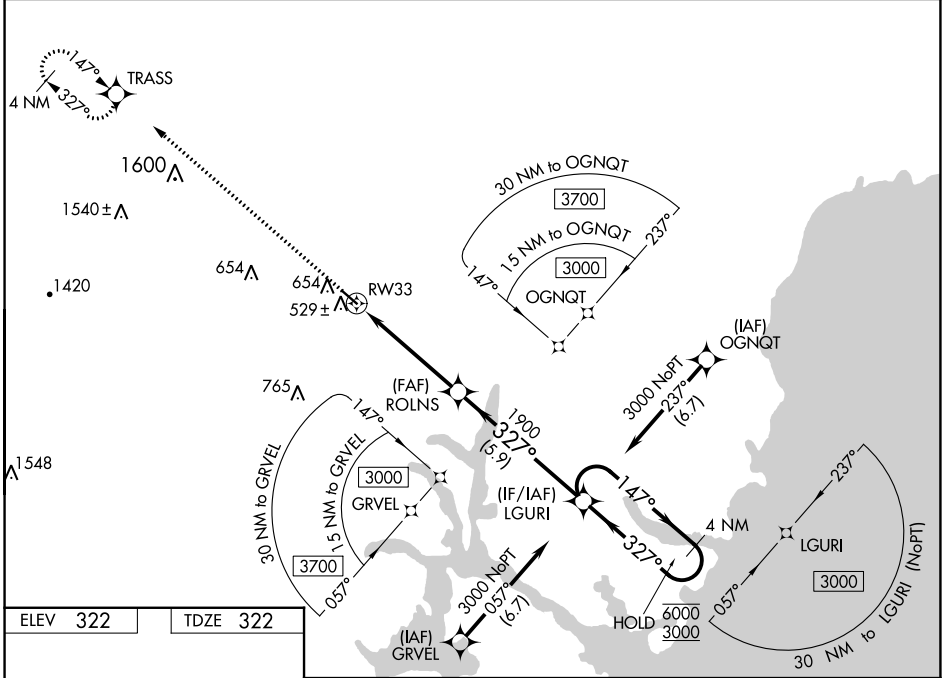
WAAS CH <b>72715</b> <b>W33A</b>	APP CRS <b>327°</b>	Rwy Idg TDZE Apt Elev	<b>4201</b> <b>322</b> <b>322</b>
--	------------------------	-----------------------------	---

# RNAV (GPS) RWY 33

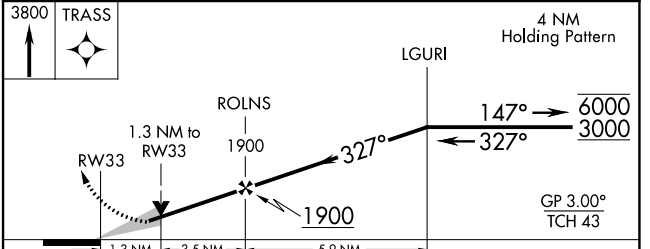
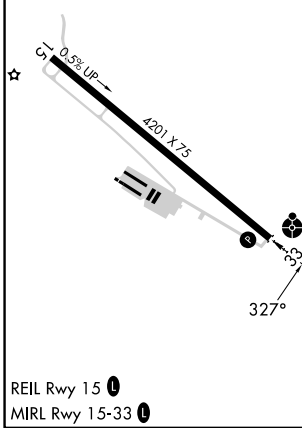
SKYHAVEN (DAW)

RNP APCH - GPS	ODALS	MISSED APPROACH: Climb to 3800 direct TRASS and hold, continue climb-in-hold to 3800.
<p>▼ Inop table does not apply to LPV and LNAV/VNAV all Cats.                  ▲ For uncompensated Baro-VNAV systems, LNAV/VNAV NA below -20°C or above 54°C. For inop ALS, increase LNAV visibility Cat C to 1½ SM.</p>		

ASOS <b>135.275</b>	BOSTON APP CON <b>125.05 269.4</b>	UNICOM <b>122.7</b> (CTAF) <b>1</b>
------------------------	---------------------------------------	--



ELEV 322	TDZE 322
----------	----------



CATEGORY	A	B	C	D
LPV DA	572-¾		250 (300-¾)	NA
LNAV/VNAV DA	699-1		377 (400-1)	NA
LNAV MDA	780-¾	458 (500-¾)	780-1½ 458 (500-1½)	NA
CIRCLING	960-1	638 (700-1)	960-1¾ 638 (700-1¾)	NA

NE-1, 13 JUN 2024 to 11 JUL 2024

NE-1, 13 JUN 2024 to 11 JUL 2024