

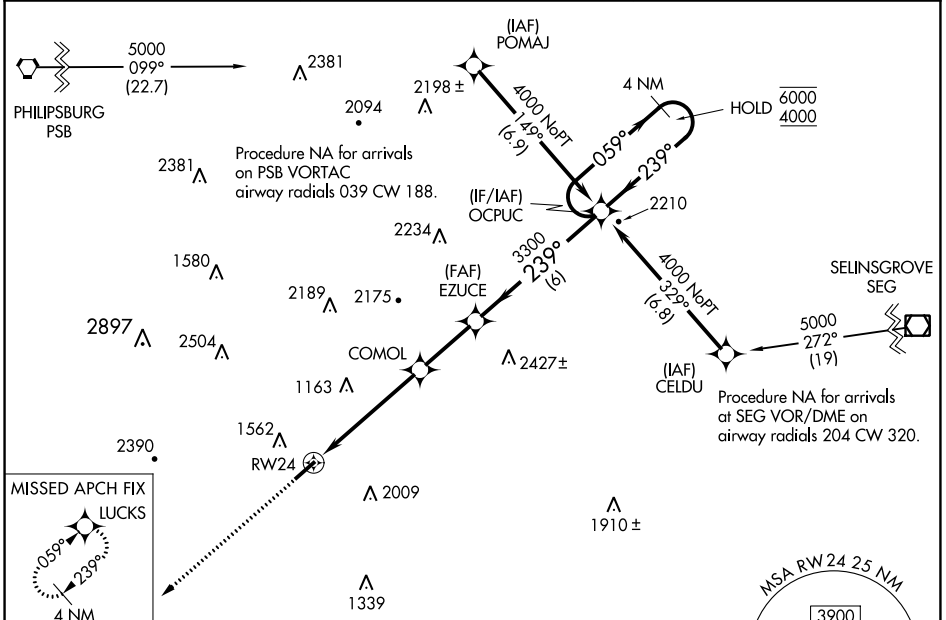
WAAS CH 78107 W24A	APP CRS 239°	Rwy Idg TDZE Apt Elev	5001 818 819
--	------------------------	-----------------------------	---

RNAV (GPS) RWY 24

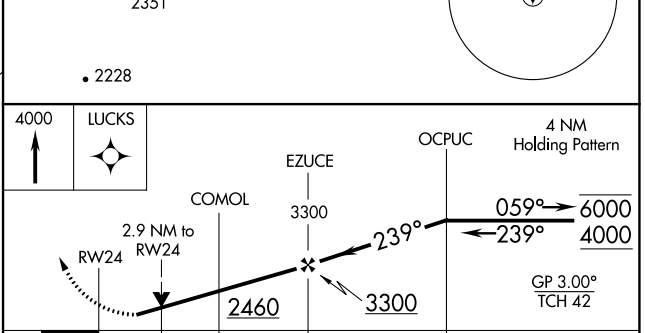
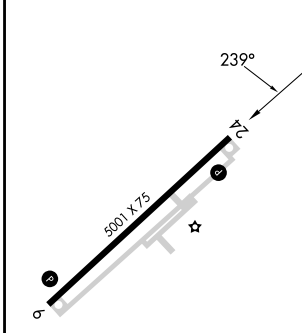
MIFFLIN COUNTY (R.V.L)

RNP APCH - GPS.		MISSED APPROACH: Climb to 4000 direct LUCKS and hold.
<p>▽ ▲</p> <p>Rwy 24 helicopter visibility reduction below 3/4 SM NA. Baro-VNAV NA.</p>		

AWOS-3PT 123.85	NEW YORK CENTER 134.8 338.3	UNICOM 122.7 (CTAF) 0
---------------------------	---------------------------------------	---------------------------------



ELEV 819	TDZE 818
----------	----------



CATEGORY	A	B	C	D
LPV DA		1506-2	688 (700-2)	
LNAV/VNAV DA		1870-4	1052 (1100-4)	
LNAV MDA	1780-1 1/4 962 (1000-1 1/4)	1780-1 1/2 962 (1000-1 1/2)	1780-3	962 (1000-3)

REIL Rwy 6 and 24 **0**
MIRL Rwy 6-24 **0**

NE-4, 13 JUN 2024 to 11 JUL 2024

NE-4, 13 JUN 2024 to 11 JUL 2024