

COPTER TACAN RWY 21

TACAN NFG Chan 55	APCH CRS 211°	Rwy ldg TDZE Arpt Elev 6005 78 78	[USN]	CAMP PENDLETON MCAS (MUNN FLD) (KNFG)
----------------------	------------------	--	-------	---------------------------------------

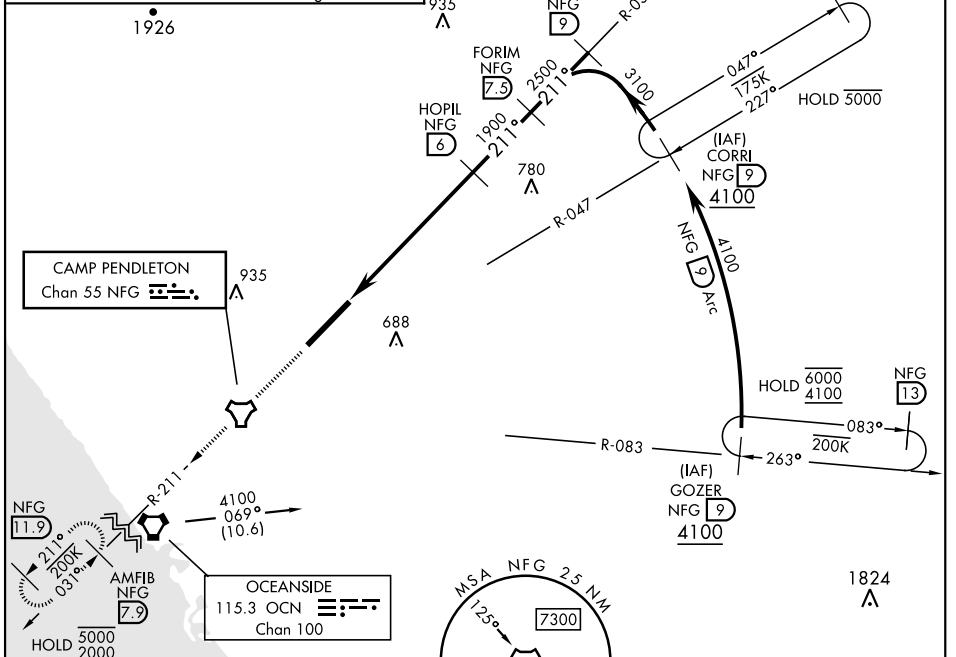
▼ * When ALS inop, increase vis to 1 mile.
 Visibility reduction by Helicopters NA.

SALSF A2 MISSED APPROACH: Climb to 2000 direct NFG TACAN then direct AMFIB and hold.

ATIS ★ 285.45	SOCAL APP CON 127.3 323.0	TOWER ★ 128.775 340.2	GND CON 134.675 360.2	CLNC DEL 134.675 271.6	ASR/ PAR
------------------	------------------------------	--------------------------	--------------------------	---------------------------	-------------

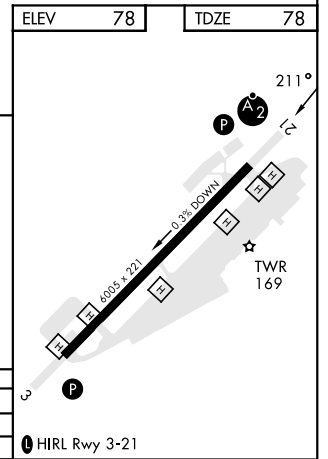
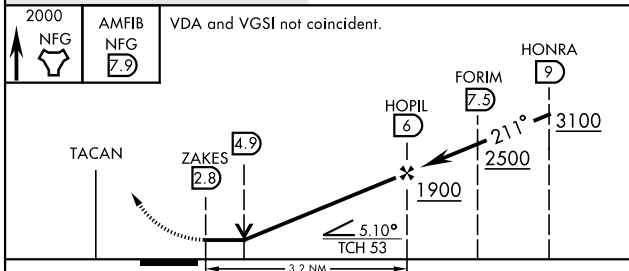
Knots	60	120	180	240	300	360
V/V(fpm)	223	446	669	892	1115	1338

Min climb of 223 ft/NM to 1300 - Controlling Obstacle Unk



ELEV	78	TDZE	78
------	----	------	----

EMERG SAFE ALT 100 NM 13,600



CATEGORY	COPTER	
H-21*	940- $\frac{3}{4}$	862 (900- $\frac{3}{4}$)
CIRCLING	NOT AUTHORIZED	

OCEANSIDE, CALIFORNIA 33°18'N-117°21'W CAMP PENDLETON MCAS (MUNN FLD) (KNFG)

Amdt 5 02DEC21

COPTER TACAN RWY 21

SW-3, 13 JUN 2024 to 11 JUL 2024

SW-3, 13 JUN 2024 to 11 JUL 2024