

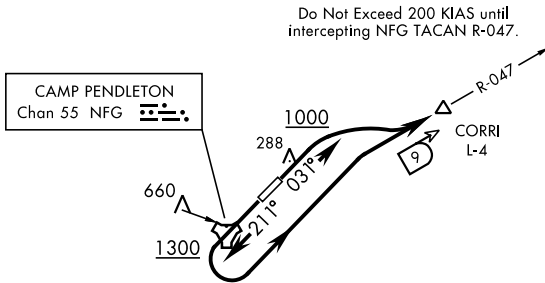
CORRI THREE DEPARTURE (OBSTACLE)(CORRI3•CORRI)

ATIS ★ 285.45
CLNC DEL
134.675 271.6
GND CON
134.675 360.2
TOWER★
128.775 340.2
SOCAL DEP CON
127.3 323.0

AL-5985 [USN]

Rwy	Knots	60	120	180	240	300	360
3	V/V(fpm)	335	670	1005	1340	1675	2010
21	V/V(fpm)	442	884	1326	1768	2210	2652

Minimum Climb Rate to 1000



CAMP PENDLETON
Chan 55 NFG

Do Not Exceed 200 KIAS until
intercepting NFG TACAN R-047.

RADAR REQUIRED
NOT FOR CIVIL USE
NOT FOR USE BY CAT D/E AIRCRAFT

DEPARTURE ROUTE DESCRIPTION

TAKE-OFF RWY 3: Climb on heading 031° to 1000 then climbing right turn to 3800 and intercept NFG TACAN R-047 to CORRI.

TAKE-OFF RWY 21: Climb on heading 211° to 1300 then climbing left turn to 3800 and intercept NFG TACAN R-047 to CORRI.