

OCEANSIDE, CALIFORNIA

# RNAV (GPS) RWY 21

WAAS CH <b>91083</b> <b>W21A</b>	APCH CRS <b>211°</b>	Rwy ldg TDZE <b>6005</b> Arprt Elev <b>78</b>
-------------------------------------	----------------------	--

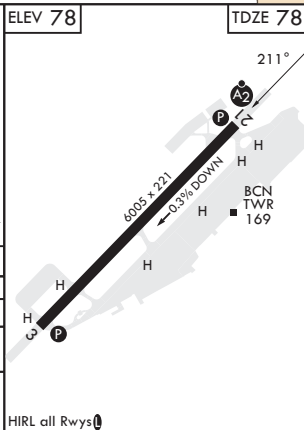
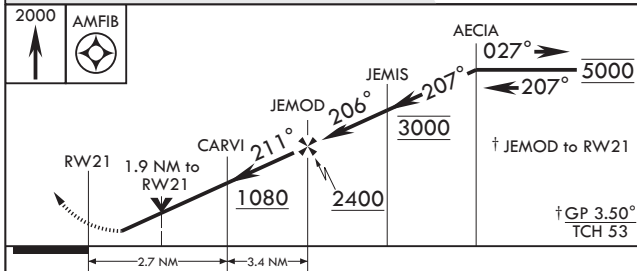
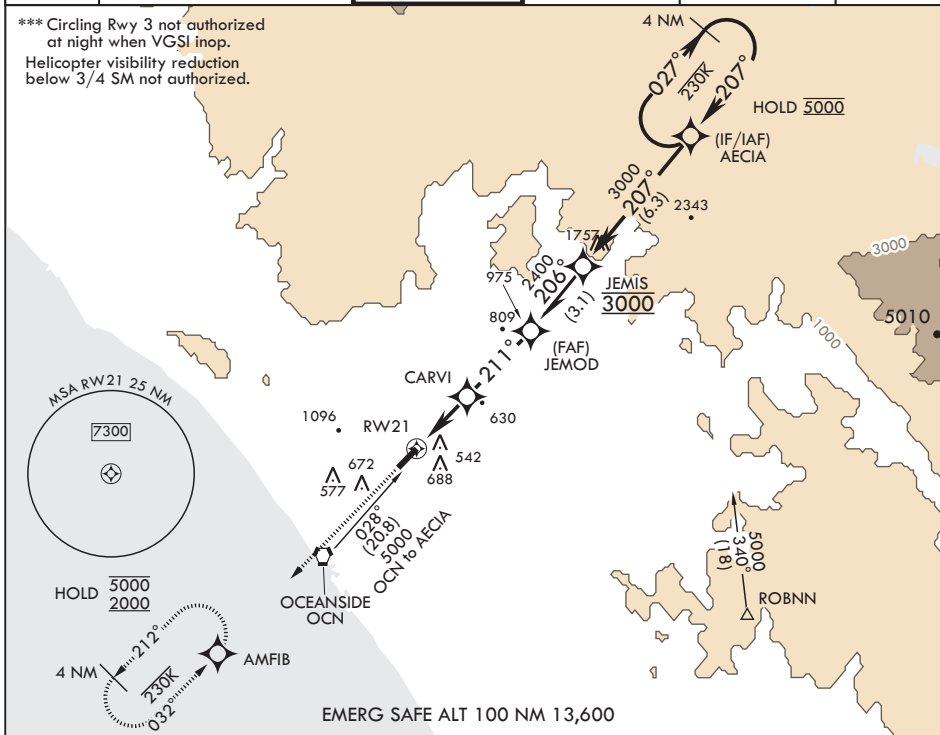
- (USN) CAMP PENDLETON MCAS (MUNN FLD) (KNFG)

RNP APCH. DME/DME RNP-0.3 N/A	SALS
<p>▼ * When ALS inop, increase vis to 1 mile.</p> <p>** When ALS inop, increase CAT A vis to 1 mile, CAT B vis to 1 1/4 miles, CAT CD vis to 2 1/2 miles.</p>	

MISSED APPROACH: Climb to 2000 direct AMFIB and hold.

ATIS★ <b>285.45</b>	SOCAL APP CON/DEP CON <b>127.3 323.0</b>	TOWER★ <b>128.775</b> <b>340.2</b>	GND CON <b>134.675 360.2</b>	CLNC DEL <b>134.675 271.6</b>	ASR/PAR
---------------------	--	------------------------------------	------------------------------	-------------------------------	---------

\*\*\* Circling Rwy 3 not authorized at night when VGSi inop.  
Helicopter visibility reduction below 3/4 SM not authorized.



CATEGORY	A	B	C	D
LPV DA*	449-3/4		371	(400-3/4)
LNAV MDA**	840-3/4 762 (800-3/4)	840-1 762 (800-1)	840-2 762 (800-2)	
CIRCLING***	1000-1 1/4 922 (1000-1 1/4)	1260-1 1/2 1182 (1200-1 1/2)	1500-3	1422 (1500-3)

OCEANSIDE, CALIFORNIA

33°18'N - 117°21'W CAMP PENDLETON MCAS (MUNN FLD) (KNFG)

Amdt 5 21APR22

# RNAV (GPS) RWY 21

SW-3, 13 JUN 2024 to 11 JUL 2024

SW-3, 13 JUN 2024 to 11 JUL 2024