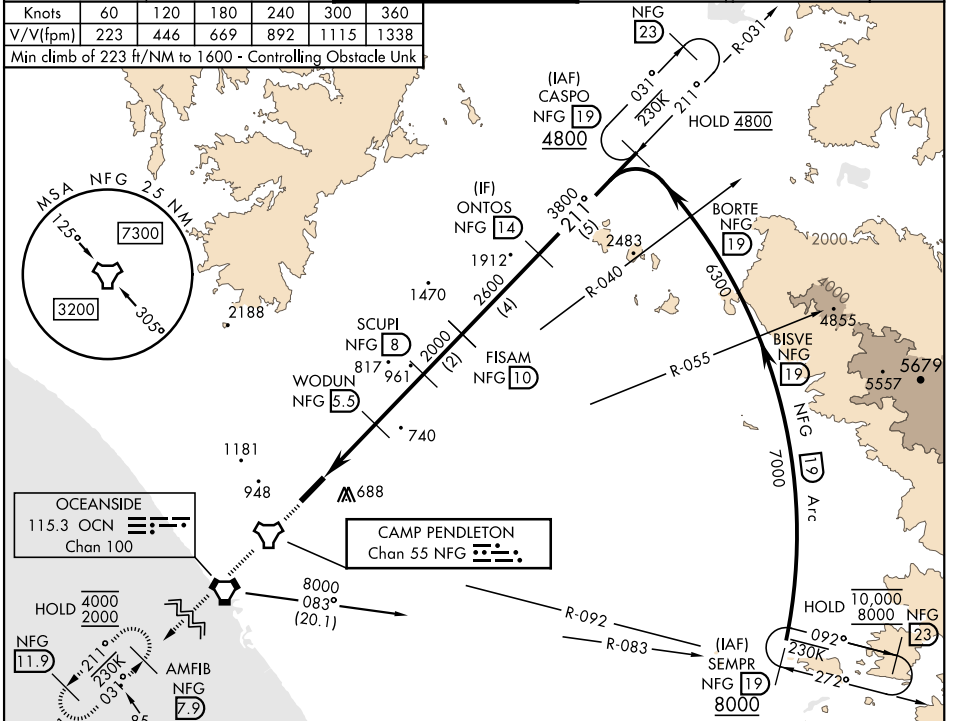


TACAN Z RWY 21

TACAN NFG Chan 55	APCH CRS 211°	Rwy Idg TDZE Arpt Elev	6005 78 78	[USN]	CAMP PENDLETON MCAS (MUNN FLD) (KNFG)
<p>▼ * When ALS inop, increase CAT A vis to 1 mile, CAT B to 1½ miles. ** Circling Rwy 3 not authorized at night when VGSI inop. Visibility Reduction by Helicopters NA.</p>				SALSF 	MISSED APPROACH: Climb to 2000 direct NFG TACAN then direct AMFIB and hold.

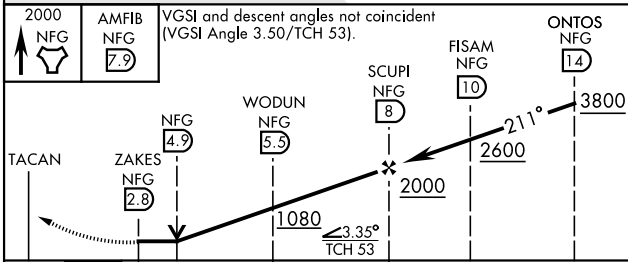
ATIS ★ 285.45	SOCAL APP CON 127.3 323.0	TOWER ★ 128.775 340.2	GND CON 134.675 360.2	CLNC DEL 134.675 271.6	ASR/PAR
-------------------------	-------------------------------------	---------------------------------	---------------------------------	----------------------------------	---------

Knots	60	120	180	240	300	360
V/V(fpm)	223	446	669	892	1115	1338
Min climb of 223 ft/NM to 1600 - Controlling Obstacle Unk						



EMERG SAFE ALT 100 NM 13,600

2000 NFG	AMFIB NFG 7.9	VGSI and descent angles not coincident (VGSI Angle 3.50/TCH 53).
----------	----------------------	--



CATEGORY	A	B	C	D
S-21*	940-¾ 862 (900-¾)	940-1 862 (900-1)	940-2½ 862 (900-2½)	
CIRCLING**	1000-1¼ 922 (1000-1¼)	1260-1½ 1182 (1200-1½)	1500-3 1422 (1500-3)	

ELEV 78	TDZE 78
---------	---------

TACAN Z RWY 21

SW-3, 13 JUN 2024 to 11 JUL 2024

SW-3, 13 JUN 2024 to 11 JUL 2024