

| | | |
|-------------|----------|-------------|
| APP CRS | Rwy Idg | 5000 |
| 301° | TDZE | 1070 |
| | Apt Elev | 1086 |

RNAV (GPS) RWY 30

MONROE MUNI (E.F.T)

RNP APCH-GPS.

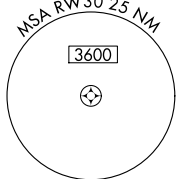
⚠ When local altimeter setting not received, use **Albertus** altimeter setting and increase all MDA 100 feet, increase LNAV Cat C/D and Circling Cat C visibility ¼ mile.
⚠ VDP NA when using **Albertus** altimeter setting. Rwy 30 helicopter visibility reduction below ¾ SM NA. Circling to Rwy 2-20 NA at night.

MISSED APPROACH:
 Climbing left turn to 3000
 direct DAVIS and hold.

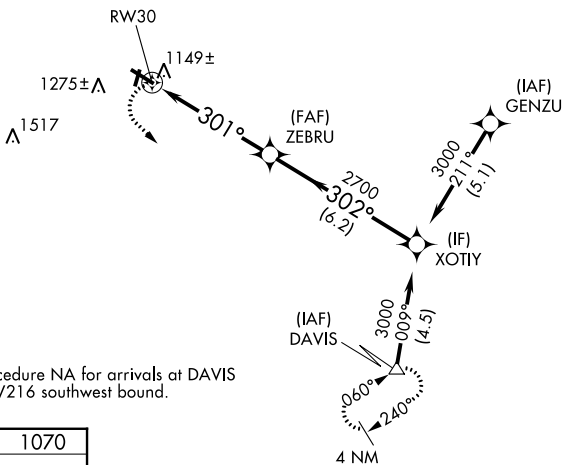
AWOS-3
118.375

ROCKFORD APP CON
126.0 327.0

UNICOM
123.05 (CTAF) 0



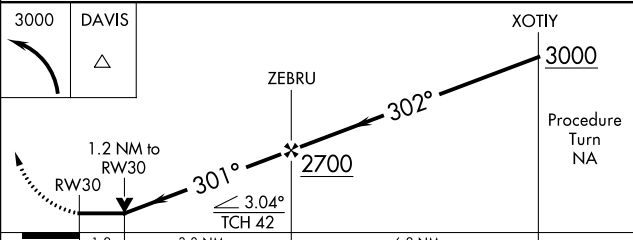
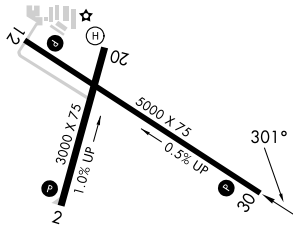
2049 **⚠**



Procedure NA for arrivals at DAVIS on V216 southwest bound.

ELEV 1086

TDZE 1070



| CATEGORY | A | B | C | D |
|----------|-----------------------|-----------------------|-------------------------|-----------------------|
| LNAV MDA | 1480-1 | 410 (400-1) | 1480-1¼ | 410 (400-1¼) |
| CIRCLING | 1540-1 454 (500-1) | 1640-1 554 (600-1) | 1640-1½ 554 (600-1½) | 1640-2 554 (600-2) |

MIRL Rwy 12-30 and 2-20 **0**
 REIL Rwy 2, 12, 20, and 30 **0**

MONROE, WISCONSIN
 Orig-B 20MAY21

42°37'N-89°35'W

RNAV (GPS) RWY 30

EC-3, 13 JUN 2024 to 11 JUL 2024

EC-3, 13 JUN 2024 to 11 JUL 2024