

SNYDER, TEXAS

AL-6013 (FAA)

23110

NDB	SDR	APP CRS	Rwy Idg	5599
359		358°	TDZE	2426
			Apt Elev	2430

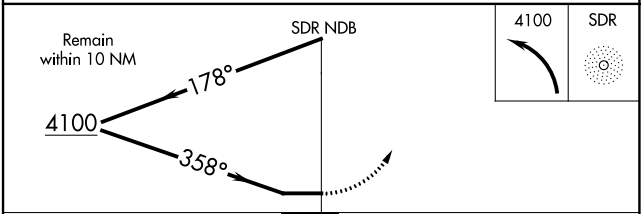
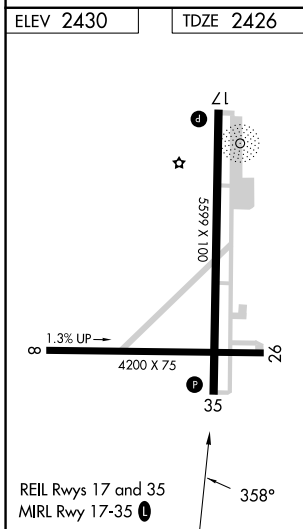
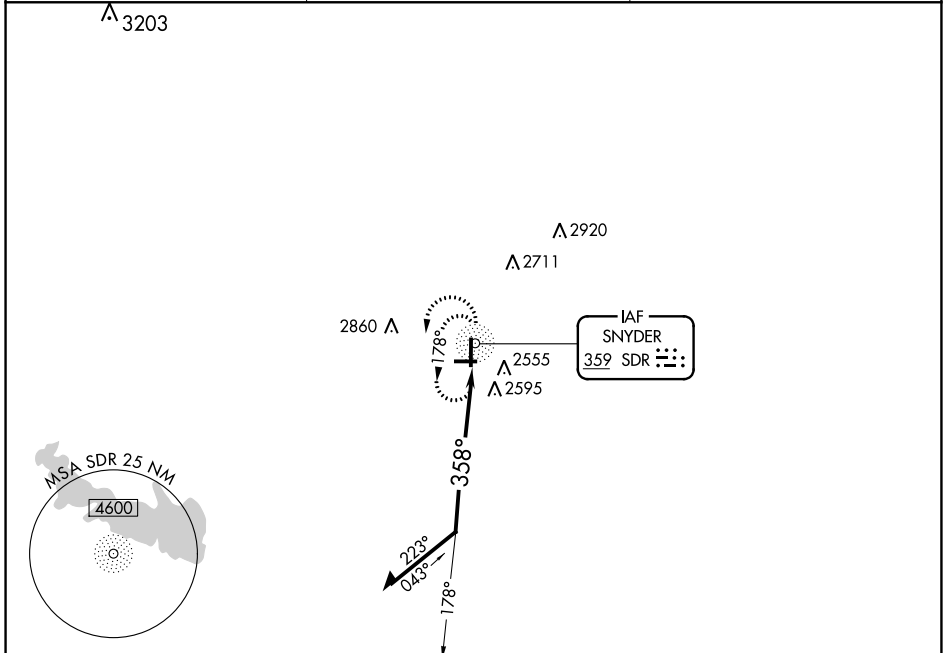
NDB RWY 35

WINSTON FLD (SNK)

NA Circling NA to Rwys 8 and 26. Circling Rwy 17 NA at night.

MISSED APPROACH: Climbing left turn to 4100 in SDR NDB holding pattern.

AWOS-3 119.925	FORT WORTH CENTER 127.45 290.3	UNICOM 122.8 (CTAF) 0
--------------------------	--	---------------------------------



CATEGORY	A	B	C	D
S-35	2960-1	534 (600-1)	2960-1½ 534 (600-1½)	NA
CIRCLING	2960-1	530 (600-1)	3220-2¼ 790 (800-2¼)	NA

SNYDER, TEXAS
Amdt 2D 20APR23

32°42'N-100°57'W

WINSTON FLD (SNK)
NDB RWY 35

SC-2, 13 JUN 2024 to 11 JUL 2024

SC-2, 13 JUN 2024 to 11 JUL 2024