

WAAS CH 70331 W35A	APP CRS 352°	Rwy ldg TDZE 2426 Apt Elev 2430
--	------------------------	---

RNAV (GPS) RWY 35

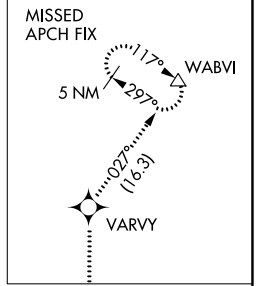
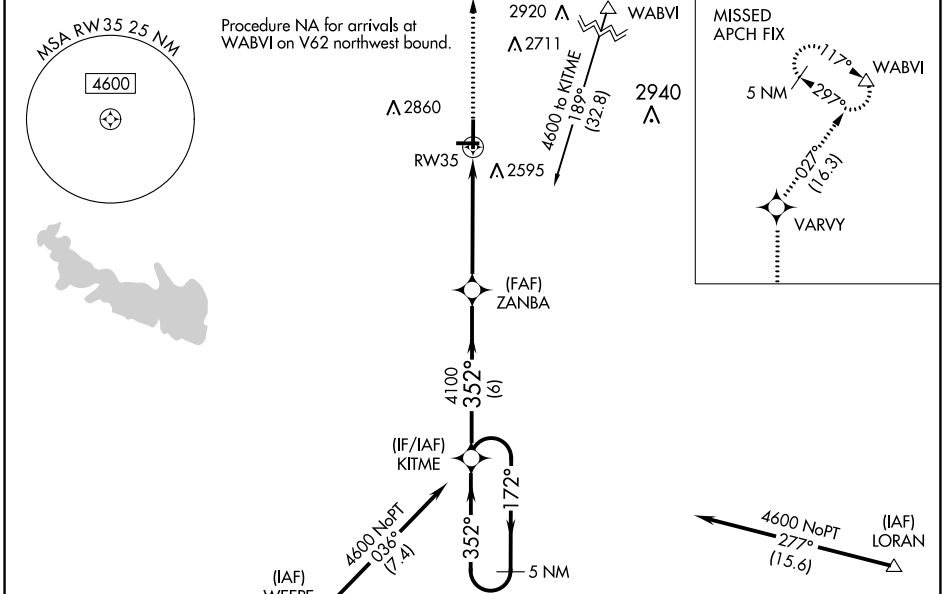
WINSTON FLD (SNK)

RNP APCH-GPS

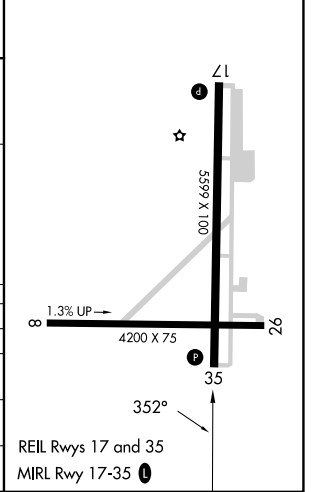
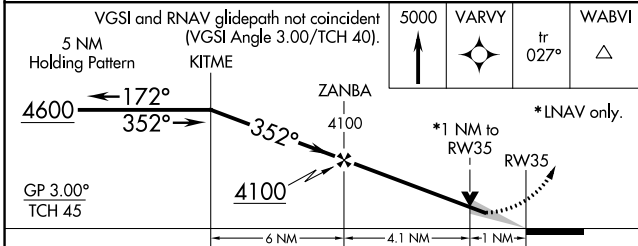
▼ Baro-VNAV NA when using Sweetwater altimeter setting. For uncompensated Baro-VNAV systems, LNAV/VNAV NA below -19°C or above 54°C. VDP NA with Sweetwater altimeter setting. When local altimeter setting not received, use Sweetwater altimeter setting and increase LPV DA to 2698 and all visibilities 1/8 SM; increase LNAV/VNAV DA to 2748 and all visibilities 3/8 SM; increase all MDAs 80 feet and LNAV and Circling visibility Cat C 1/4 SM. Circling NA to Rwys 8 and 26. Circling Rwy 17 NA at night.

MISSED APPROACH:
Climb to 5000 direct VARVY and on track 027° to WABVI and hold, continue climb-in-hold to 6000.

AWOS-3 119.925	FORT WORTH CENTER 127.45 290.3	UNICOM 122.8 (CTAF)
--------------------------	--	-------------------------------



ELEV 2430	TDZE 2426
-----------	-----------



CATEGORY	A	B	C	D
LPV DA		2626-3/4	200 (200-3/4)	NA
LNAV/VNAV DA		2676-3/4 250 (300-3/4)		NA
LNAV MDA		2780-1 354 (400-1)		NA
CIRCLING	2940-1 510 (600-1)		3220-2 1/4 790 (800-2 1/4)	NA

SC-2, 13 JUN 2024 to 11 JUL 2024

SC-2, 13 JUN 2024 to 11 JUL 2024