

WAAS CH 50232 W13A	APP CRS 125°	Rwy Idg TDZE Apt Elev	5152 358 358
--	------------------------	-----------------------------	---

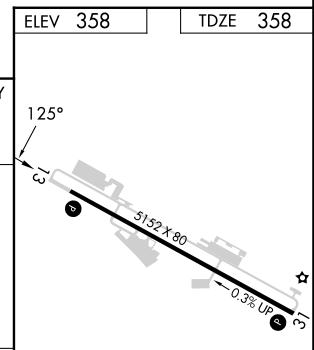
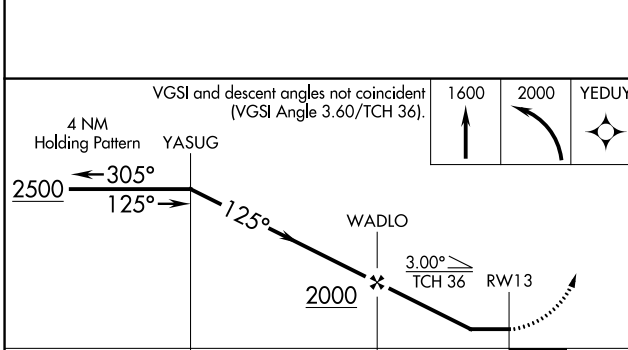
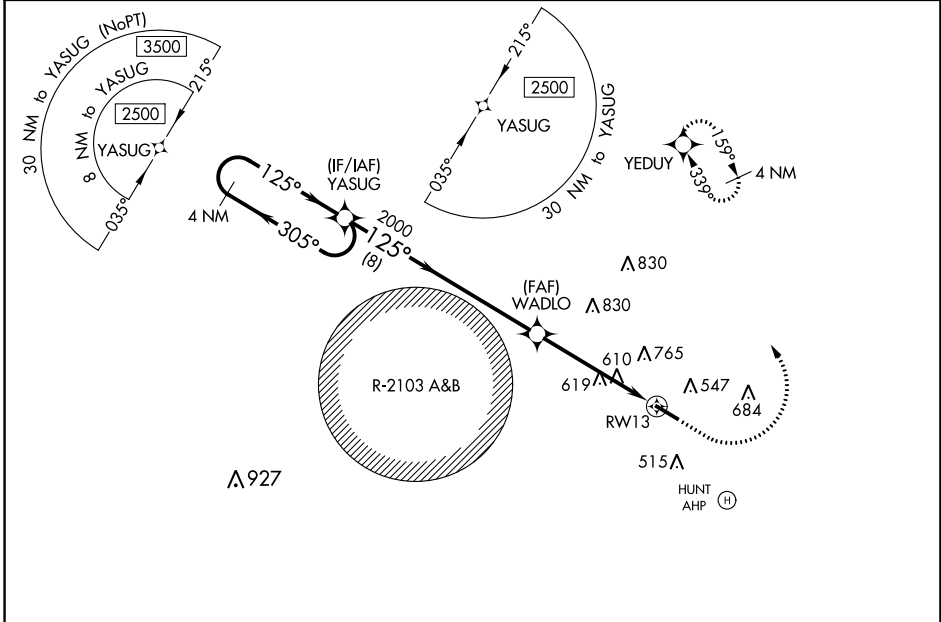
RNAV (GPS) RWY 13

OZARK/BLACKWELL FLD (71J)

RNP APCH. MISSED APPROACH: Climb to 1600 then climbing left turn to 2000 direct YEDUY and hold.

NA Use Dothan altimeter setting; when not received, use Cairns AAF (Fort Novosel) altimeter setting. Procedure NA at night. Rwy 13 helicopter visibility reduction below 1 SM NA.

DHN ASOS 135.725	CAIRNS APP CON ★ 125.4 327.125	UNICOM 122.7 (CTAF)
----------------------------	--	-------------------------------



CATEGORY	A	B	C	D
LP MDA	900-1	542 (600-1)	900-1 5/8 542 (600-1 5/8)	NA
LNAV MDA	960-1	602 (700-1)	960-1 3/4 602 (700-1 3/4)	NA
CIRCLING	960-1 602 (700-1)	1100-1 1/4 742 (800-1 1/4)	1100-2 1/4 742 (800-2 1/4)	NA

REIL Rws 13 and 31 **0**
MIRL Rwy 13-31 **0**

SE-4, 13 JUN 2024 to 11 JUL 2024

SE-4, 13 JUN 2024 to 11 JUL 2024