

OZARK, ALABAMA

AL-6017 (FAA)

23110

WAAS CH 62832 W31A	APP CRS 305°	Rwy Idg 5152 TDZE 350 Apt Elev 358
--	------------------------	---

RNAV (GPS) RWY 31

OZARK/BLACKWELL FLD (71J)

RNP APCH.

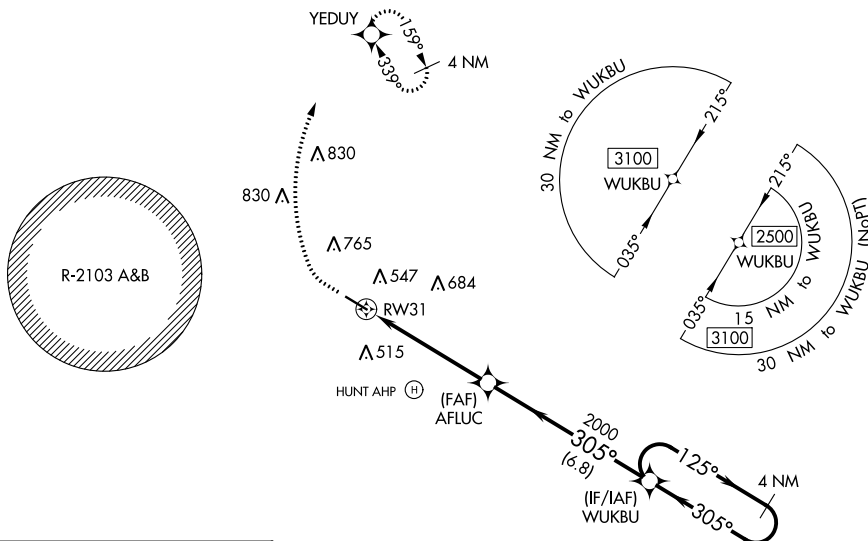
▼ Baro-VNAV NA. Use Dothan altimeter setting; when not received, use Cairns AAF (Fort Novossel) altimeter setting.
 ▲ NA Rwy 31 helicopter visibility reduction below ¾ SM NA. Circling Rwy 13, 31 NA at night.

MISSED APPROACH: Climb to 900 then climbing right turn to 2000 direct YEDUY and hold.

DHN ASOS
135.725

CAIRNS APP CON ★
125.4 327.125

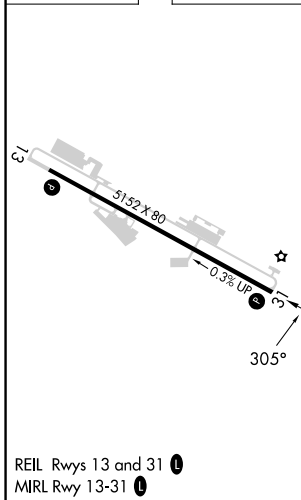
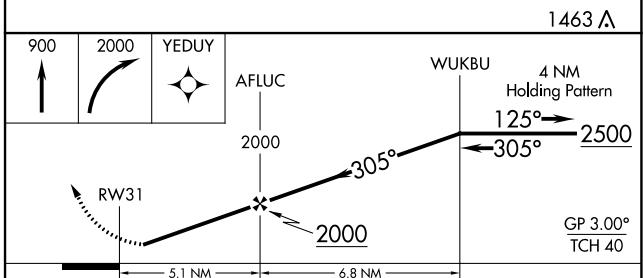
UNICOM
122.7 (CTAF) 0



SE-4, 13 JUN 2024 to 11 JUL 2024

SE-4, 13 JUN 2024 to 11 JUL 2024

ELEV	358	TDZE	350
------	-----	------	-----



CATEGORY	A	B	C	D
LPV DA	661-1 310 (400-1)			NA
LNAV/VNAV DA	851-1¾ 501 (500-1¾)			NA
LNAV MDA	860-1	510 (600-1)	860-1⅜ 510 (600-1⅜)	NA
CIRCLING	900-1 542 (600-1)	1100-1¾ 742 (800-1¾)	1100-2¼ 742 (800-2¼)	NA

OZARK, ALABAMA
Orig-C 30DEC21

31°26'N-85°37'W

OZARK/BLACKWELL FLD (71J) RNAV (GPS) RWY 31