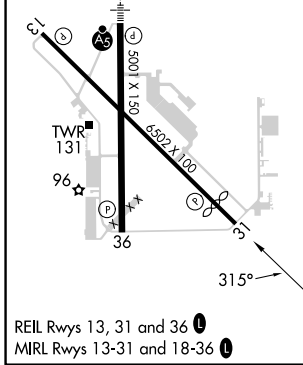
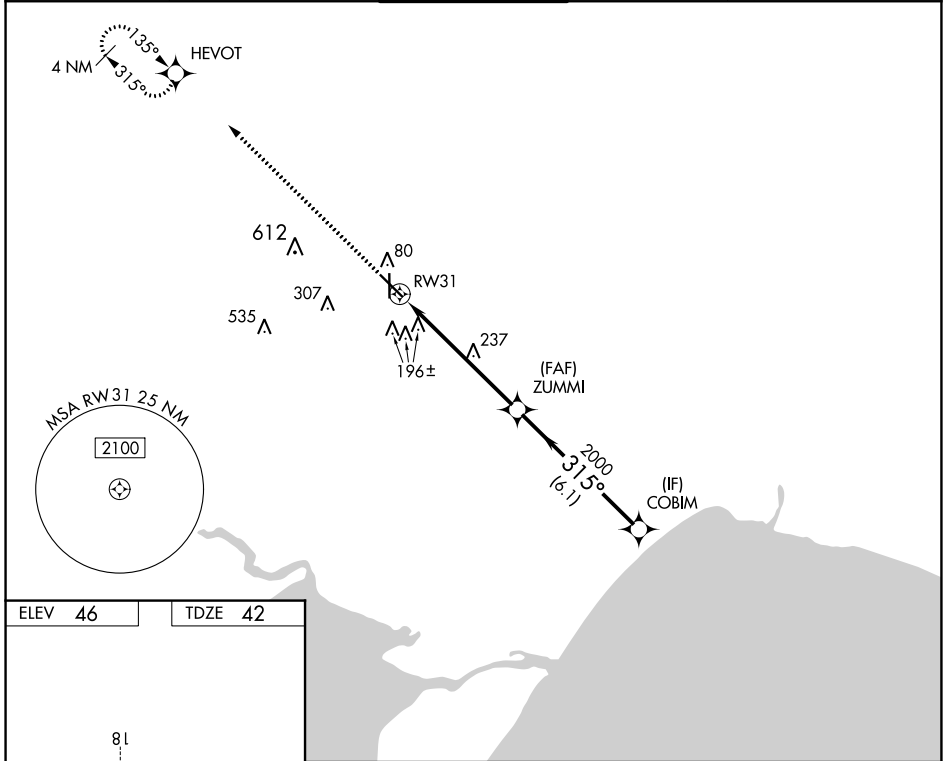


APP CRS	Rwy Idg	5812
315°	TDZE	42
	Apt Elev	46

RNAV (GPS) RWY 31

HAMMOND NORTHSORE RGNL (HDC)

RNP APCH - GPS.		<p>▼ Rwy 31 helicopter visibility reduction below $\frac{3}{4}$ SM NA. VDP NA when using Louis Armstrong New Orleans Intl altimeter setting. When local altimeter setting not received, use Louis Armstrong New Orleans Intl altimeter setting and increase all MDAs 100 feet and LNAV visibility Cat C/D $\frac{1}{4}$ SM, and Circling visibility Cat C/D $\frac{1}{2}$ SM.</p>		<p>MISSED APPROACH: Climb to 2000 direct HEVOT and hold.</p>	
ATIS	NEW ORLEANS APP CON	HAMMOND TOWER ★	GND CON	CLNC DEL	
118.325	119.3 350.35	120.575 (CTAF) 0	119.85	119.3	
				(When twr closed)	



ELEV 46	TDZE 42	<p>2000 HEVOT</p>			
		ZUMMI	COBIM		
<p>1.2 NM to RWY 31</p>		<p>315°</p>		<p>2000</p>	
<p>1.2 NM</p>		<p>4.8 NM</p>		<p>6.1 NM</p>	
CATEGORY	A	B	C	D	
LNAV MDA	500-1	458 (500-1)	500-1 $\frac{3}{8}$	458 (500-1 $\frac{3}{8}$)	
C CIRCLING	500-1	454 (500-1)	620-1 $\frac{1}{2}$	920-2 $\frac{3}{4}$	
			574 (600-1 $\frac{1}{2}$)	874 (900-2 $\frac{3}{4}$)	

VGSI and descent angles not coincident (VGSI Angle 3.30/TCH 56).

SC-4, 13 JUN 2024 to 11 JUL 2024

SC-4, 13 JUN 2024 to 11 JUL 2024