

WAAS CH 99529 W26A	APP CRS 262°	Rwy Idg TDZE Apt Elev	3501 741 741
--	------------------------	-----------------------------	---

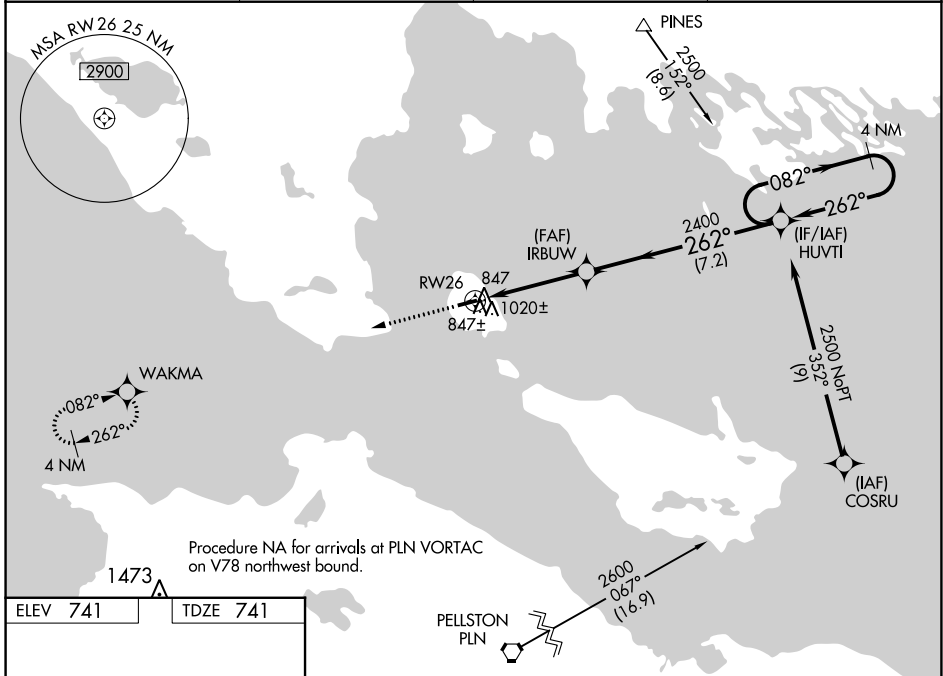
RNAV (GPS) RWY 26

MACKINAC ISLAND (MCD)

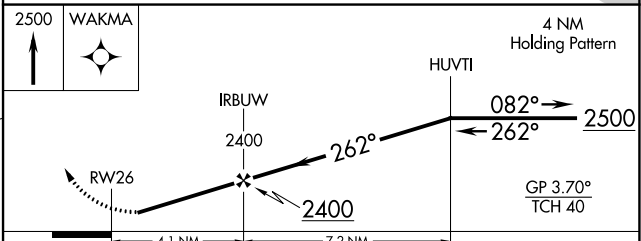
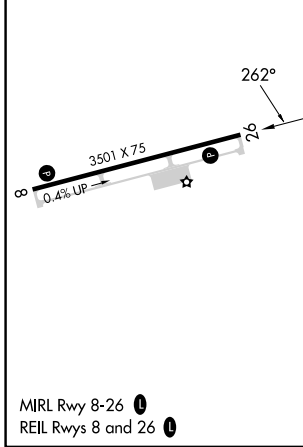
⚠ Baro-VNAV NA when using Pellston altimeter setting. For uncompensated Baro-VNAV systems, LNAV/VNAV NA below -16°C (4°F) or above 54°C (130°F). When local altimeter setting not received, use Pellston altimeter setting and increase all DA 47 feet and all MDA 60 feet, increase LNAV Cat C visibility 1/8 mile and Circling Cat C visibility 1/4 mile. DME/DME RNP-0.3 NA. Helicopter visibility reduction below 1 SM NA. Night landing: Rwy 8 NA.

MISSED APPROACH:
Climb to 2500 direct WAKMA and hold.

AWOS-3 118.275	MINNEAPOLIS CENTER 134.6 354.05	UNICOM 122.7 (CTAF)	122.80
--------------------------	---	-------------------------------	---------------



ELEV 741	TDZE 741
----------	----------



CATEGORY	A		B		C		D	
	1058-1	317 (400-1)	441 (500-1 3/8)	539 (600-1)	1280-1 1/2 539 (600-1 1/2)	1320-1 1/2 579 (600-1 1/2)	NA	NA
LPV DA								
LNAV/VNAV DA								
LNAV MDA								
C CIRCLING								