

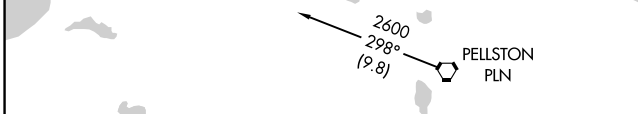
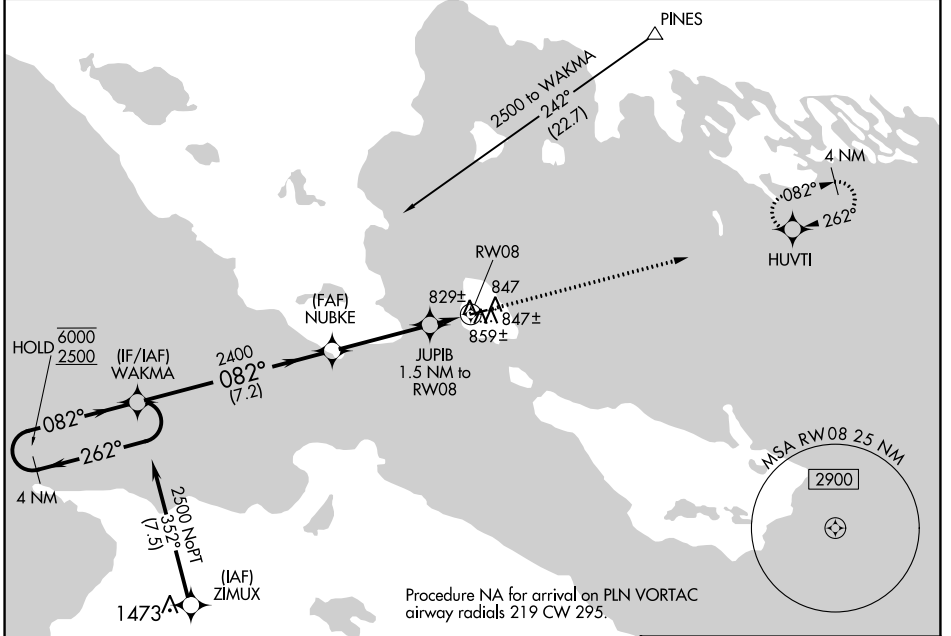
WAAS CH 63129 W08A	APP CRS 082°	Rwy ldg 3501 TDZE 739 Apt Elev 741
--	------------------------	---

RNAV (GPS) RWY 8

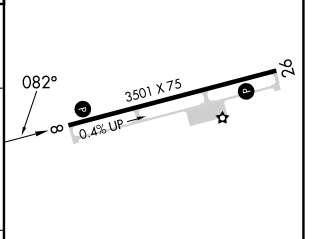
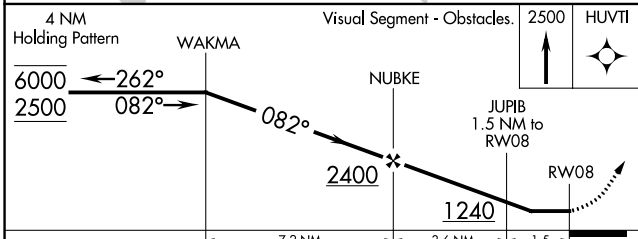
MACKINAC ISLAND (MCD)

RNP APCH.	<p>▼ Rwy 8 helicopter visibility reduction below 1 SM NA. When local altimeter setting not received, use Pellston altimeter setting and increase all MDA 60 feet, increase LP and LNAV Cat C visibility 1/8 SM and Circling Cat C visibility 1/4 SM. Straight-in and Circling Rwy 8 NA at night.</p> <p>▲ MISSED APPROACH: Climb to 2500 direct HUVTI and hold.</p>
AWOS-3 118.275	

MINNEAPOLIS CENTER 134.6 354.05	UNICOM 122.7 (CTAF)	122.8
---	-------------------------------	--------------



ELEV 741	TDZE 739
----------	----------



CATEGORY	A	B	C	D
LP MDA	1080-1 341 (400-1)			NA
LNAV MDA	1120-1	381 (400-1)	1120-1 1/8 381 (400-1 1/8)	NA
CIRCLING	1320-1	579 (600-1)	1320-1 1/2 579 (600-1 1/2)	NA

MIRL Rwy 8-26 **1**
REIL Rwy 8 and 26 **1**

EC-1, 13 JUN 2024 to 11 JUL 2024

EC-1, 13 JUN 2024 to 11 JUL 2024