

LOC/DME I-DJK 109.95 Chan 36 (Y)	APP CRS 022°	Rwy Idg 7026 TDZE 913 Apt Elev 913
--	------------------------	---

ILS or LOC RWY 2

DE KALB TAYLOR MUNI (DKB)

RADAR required for procedure entry. DME or RADAR required.

V VDP NA with Aurora altimeter setting. When local altimeter setting not received, use Aurora altimeter setting and increase DA to 1174 feet and all MDA 80 feet; **A** CETAN fix minimums increase Circling Cat C and D visibility 1/4 SM. For inop ALS, increase S-ILS 2 all Cats visibility to 3/8 SM. CETAN fix minimums: For inop ALS, increase S-LOC 2 Cat C and D visibility to 1 SM.

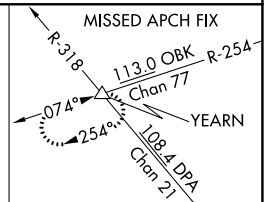
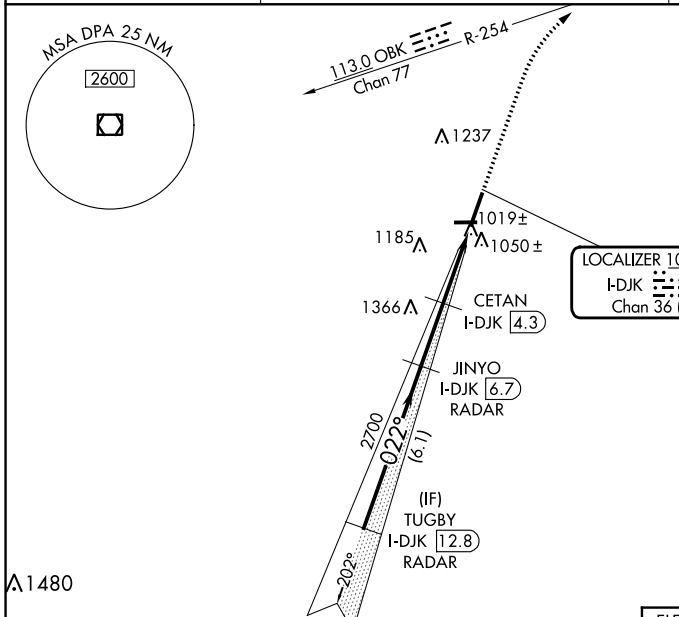


MISSED APPROACH:
Climb to 3000 on heading 022° and OBK VOR/DME R-254 to YEARN 1nt and hold.

AWOS-3
119.075

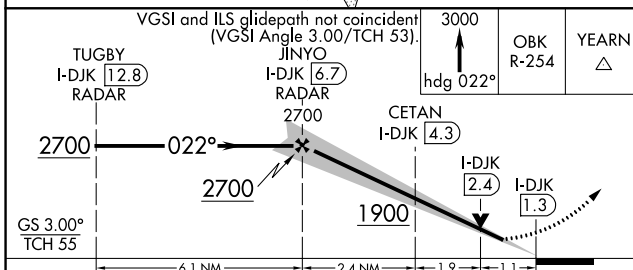
CHICAGO APP CON
133.5 349.0

UNICOM
122.7(CTAF) **0**

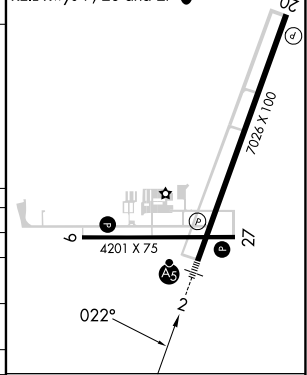


EC-3, 13 JUN 2024 to 11 JUL 2024

EC-3, 13 JUN 2024 to 11 JUL 2024



ELEV 913	TDZE 913
MIRL Rwys 2-20	
MIRL Rwys 9-27	
REIL Rwys 9, 20 and 27	



CATEGORY	A	B	C	D
S-ILS 2	1113-1/2		200 (200-1/2)	
S-LOC 2	1900-3/4 987 (1000-3/4)	1900-1 987 (1000-1)	1900-2 1/2	987 (1000-2 1/2)
CIRCLING	1900-1 1/4 987 (1000-1 1/4)	1900-1 1/2 987 (1000-1 1/2)	1900-3	987 (1000-3)
CETAN FIX MINIMUMS (DME REQUIRED)				
S-LOC 2	1280-1/2	367 (400-1/2)	1280-5/8	367 (400-5/8)
CIRCLING	1360-1 447 (500-1)	1500-1 587 (600-1)	1600-2 687 (700-2)	1740-2 3/4 827 (900-2 3/4)

FAF to MAP 5.4 NM					
Knots	60	90	120	150	180
Min:Seq	5:24	3:36	2:42	2:10	1:48