


LOC/DME I-ECH 109.3 Chan 30	APP CRS 115°	Rwy Idg TDZE 7500 92	Apt Elev 92
--	------------------------	--	-----------------------

ILS Y or LOC Y RWY 11

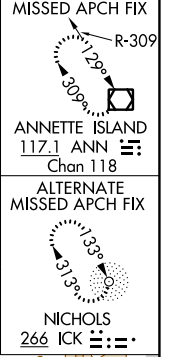
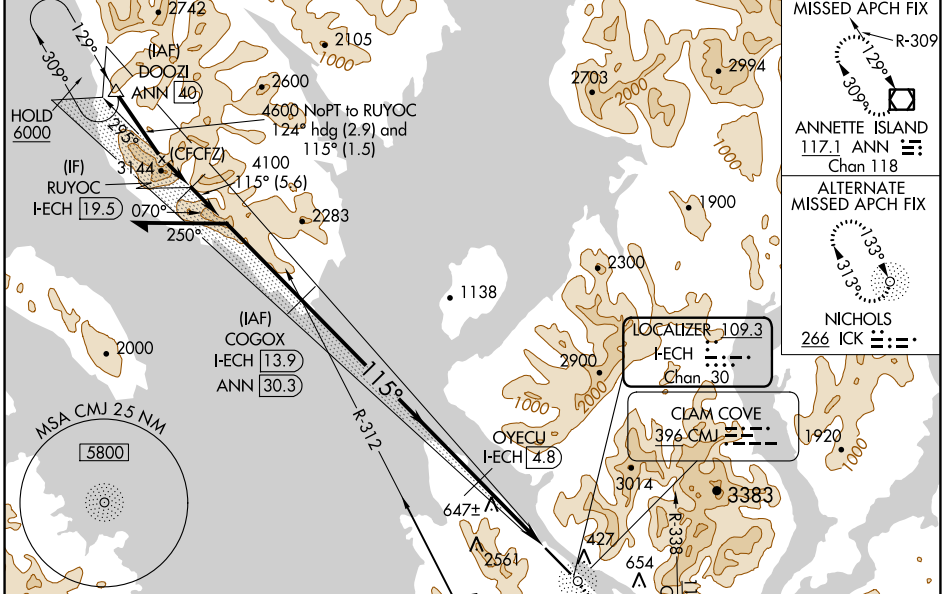
KETCHIKAN INTL (KTN)(PAKT)

⚠ DME and ADF required. For inop MALS, increase S-ILS 11† visibility to RVR 6000 and S-LOC 11 Cats C and D visibility to 2½.
RVR 1800 authorized with the use of FD or AP or HUD to DA.

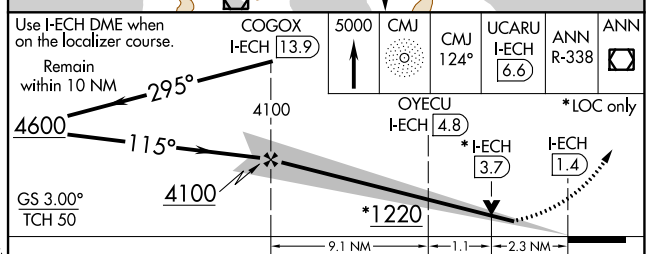
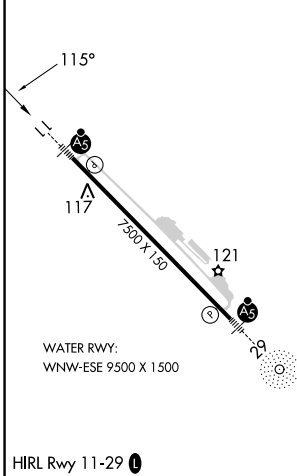
MALS 

MISSED APPROACH: Climb to 5000 direct CMJ NDB and on CMJ NDB bearing 124° to UCARU/I-ECH 6.6 DME and on ANN VOR/DME R-338 to ANN VOR/DME and hold.
S-ILS 11 missed approach requires minimum climb of 305 feet per NM to 4000.
† S-ILS 11 missed approach requires minimum climb of 270 feet per NM to 4000.
S-LOC 11 missed approach requires minimum climb of 235 feet per NM to 4000.
If unable to meet climb gradients, see LOC X RWY 11.

AFIS 134.45	ANCHORAGE CENTER 118.5 284.6	KETCHIKAN RADIO 123.6 (CTAF)
-----------------------	--	--



ELEV 92	TDZE 92
---------	---------



CATEGORY	A	B	C	D
S-ILS 11 #		292/24	200 (200-½)	
S-ILS 11 †		481/45	389 (400-¾)	
S-LOC 11	880/24 788 (800-½)	880/40 788 (800-¾)	880-1¾	788 (800-1¾)

AK, 16 MAY 2024 to 11 JUL 2024

AK, 16 MAY 2024 to 11 JUL 2024