


LOC/DME I-ECH 109.3 Chan 30	APP CRS 115°	Rwy Idg 7500 TDZE 92 Apt Elev 92
--	------------------------	---

ILS Z or LOC Z RWY 11

KETCHIKAN INTL (KTN)(PAKT)

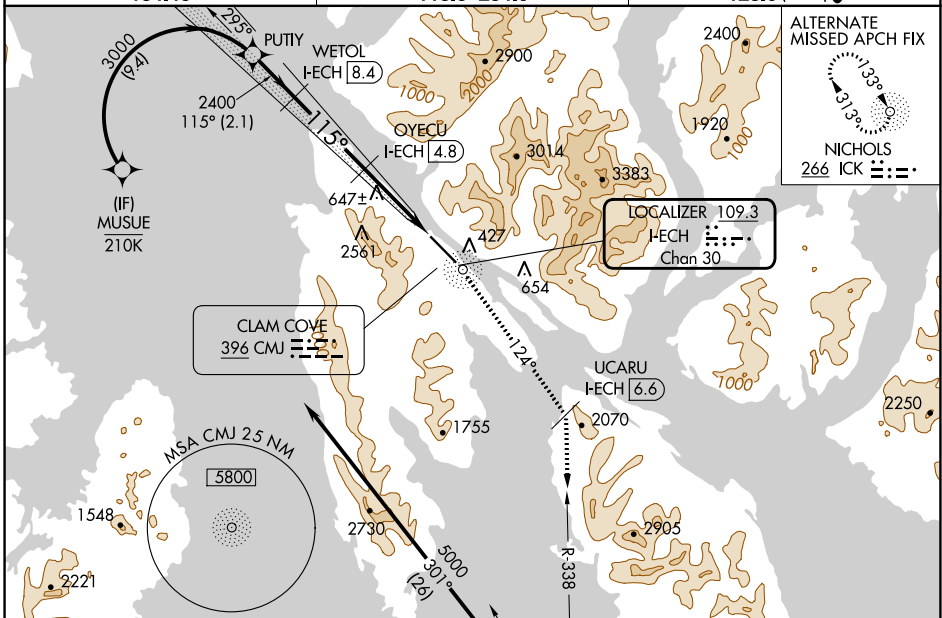
⚠ RF, GPS, DME and ADF required. For inop MALSR, increase S-LOC 11 Cats C and D visibility to 2½. #RVR 1800 authorized with the use of FD or AP or HUD to DA.

MALSRL 

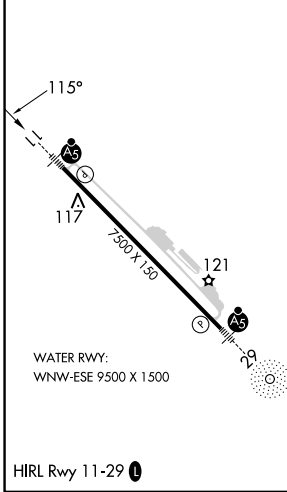
MISSED APPROACH: Climb to 5000 direct CMJ NDB and on CMJ NDB bearing 124° to UCARU I-ECH 6.6 DME and on ANN VOR/DME R-338 to ANN VOR/DME and hold.

S-ILS 11 missed approach requires minimum climb of 305 feet per NM to 4000.
S-LOC 11 missed approach requires minimum climb of 235 feet per NM to 4000.
If unable to meet climb gradients, see LOC X RWY 11.

AFIS 134.45	ANCHORAGE CENTER 118.5 284.6	KETCHIKAN RADIO 123.6 (CTAF)
-----------------------	--	--



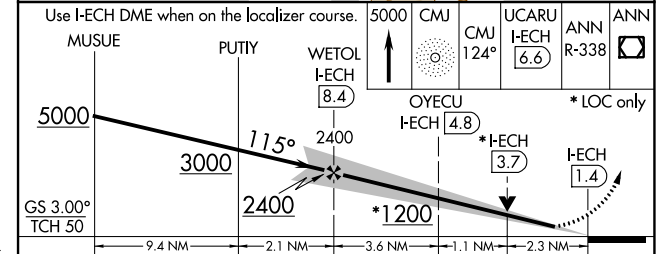
ELEV 92	TDZE 92
---------	---------



NICHOLS 266 ICK

Procedure NA for arrivals on ANN VOR/DME airway radials 290 CW 309.

IAF ANNETTE ISLAND 117.1 ANN Chan 118



CATEGORY	A	B	C	D
#S-ILS 11	292/24 200 (200-½)			
S-LOC 11	880/24 788 (800-½)	880/40 788 (800-¾)	880-1¼ 788 (800-1¼)	

AK, 16 MAY 2024 to 11 JUL 2024

AK, 16 MAY 2024 to 11 JUL 2024