

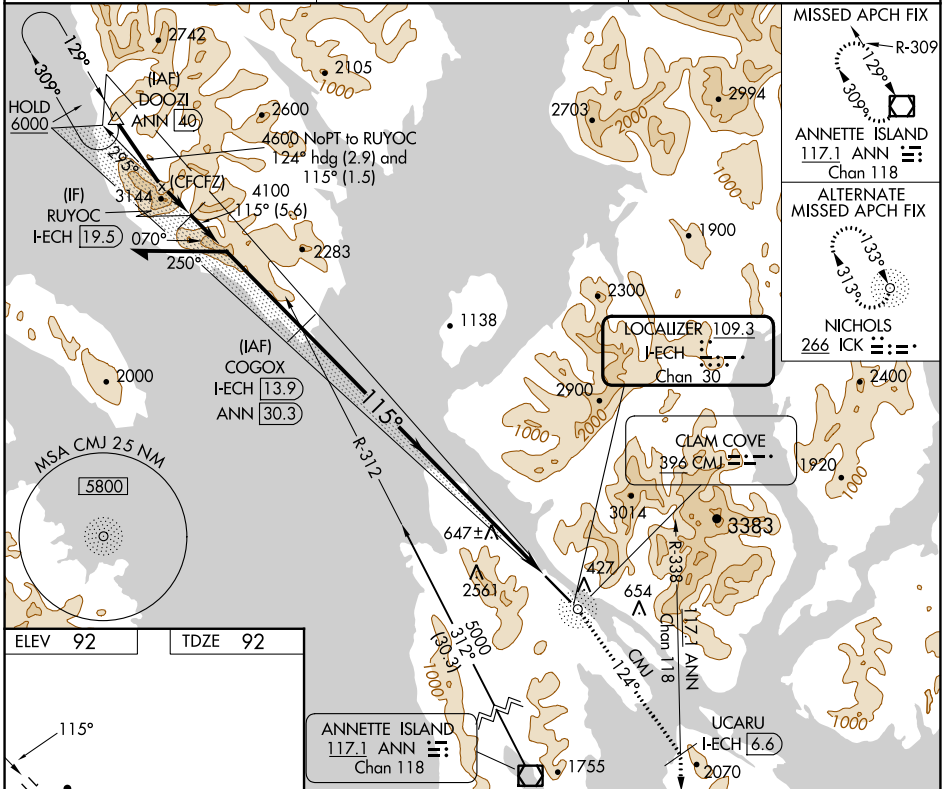
LOC/DME I-ECH 109.3 Chan 30	APP CRS 115°	Rwy Idg 7500 TDZE 92 Apt Elev 92
--	------------------------	---

LOC X RWY 11

KETCHIKAN INTL (KTN)(PAKT)

<p>Circling NA at night. Inoperative table does not apply. DME and ADF required.</p>	<p>MALSR</p>	<p>MISSED APPROACH: Climb to 5000 direct CMJ NDB then on CMJ NDB bearing 124° to UCARU/I-ECH 6.6 DME and on ANN VOR/DME R-338 to ANN VOR/DME and hold.</p>

AFIS 134.45	ANCHORAGE CENTER 118.5 284.6	KETCHIKAN RADIO 123.6 (CTAF) 0
-----------------------	--	--



MISSED APCH FIX

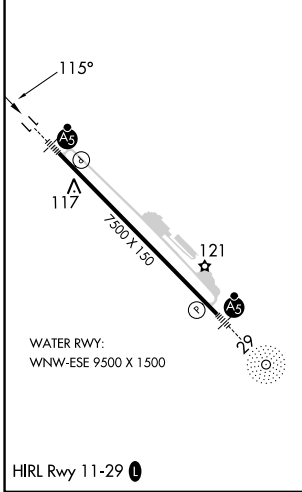
R-309

ANNETTE ISLAND
117.1 ANN
Chan 118

ALTERNATE MISSED APCH FIX

NICHOLS
266 ICK

ELEV 92	TDZE 92
---------	---------



Remain within 10 NM

COGOX I-ECH 13.9

5000 CMJ

UCARU I-ECH 6.6 ANN R-338

4600

Use I-ECH DME when on the localizer course.

4100

I-ECH 6.6

I-ECH 1.4

7.3 NM

5.2 NM

3.00° TCH 50

CATEGORY	A	B	C	D
S-11	1780-1¼ 1688 (1700-1¼)	1780-1½ 1688 (1700-1½)	1780-3	1688 (1700-3)
CIRCLING	2100-1¼ 2008 (2100-1¼)	2640-1½ 2548 (2600-1½)	3020-3 2928 (3000-3)	3300-3 3208 (3300-3)

AK, 16 MAY 2024 to 11 JUL 2024

AK, 16 MAY 2024 to 11 JUL 2024