

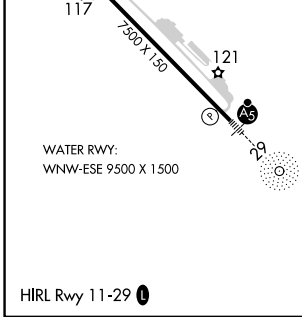
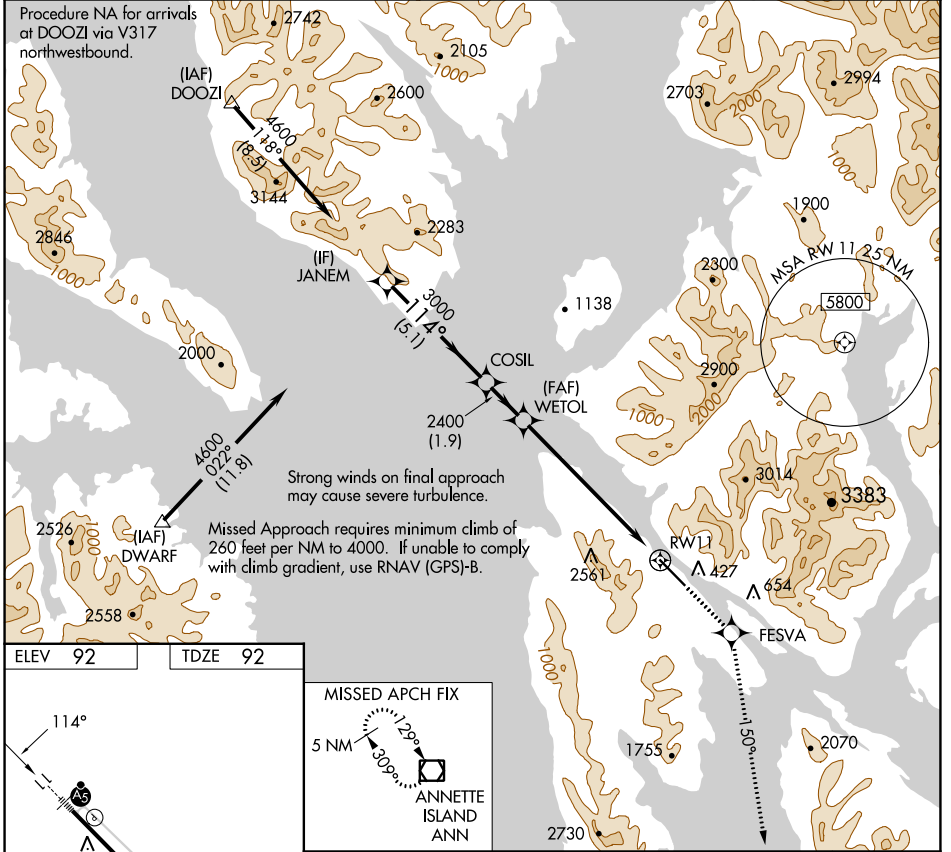
WAAS CH 58009 W11A	APP CRS 114°	Rwy Idg TDZE Apt Elev 92 92
--	------------------------	---

RNAV (GPS) RWY 11

KETCHIKAN INTL (KTN)(PAKT)

RNP APCH-GPS.	MALSRL	MISSED APPROACH: Climb to 5000 direct FESVA and on 150° track to ANN VOR/DME and hold.
NA For inoperative ALS, increase LPV DA visibility to RVR 6000.		

AFIS 134.45	ANCHORAGE CENTER 118.5 284.6	KETCHIKAN RADIO 123.6 (CTAF) 0
-----------------------	--	--



MISSED APCH FIX	Turn NA	JANEM	COSIL	WETOL	5000	FESVA	150° tr	ANN
	GP 3.00° TCH 50	4600	3000	2400	5.1 NM	1.9 NM	6.8 NM	RW11
CATEGORY	A	B	C	D				
LPV DA	442/40			350 (400-3/4)	NA			

AK, 16 MAY 2024 to 11 JUL 2024

AK, 16 MAY 2024 to 11 JUL 2024