

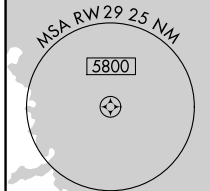
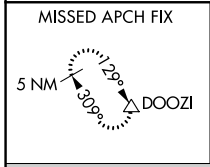
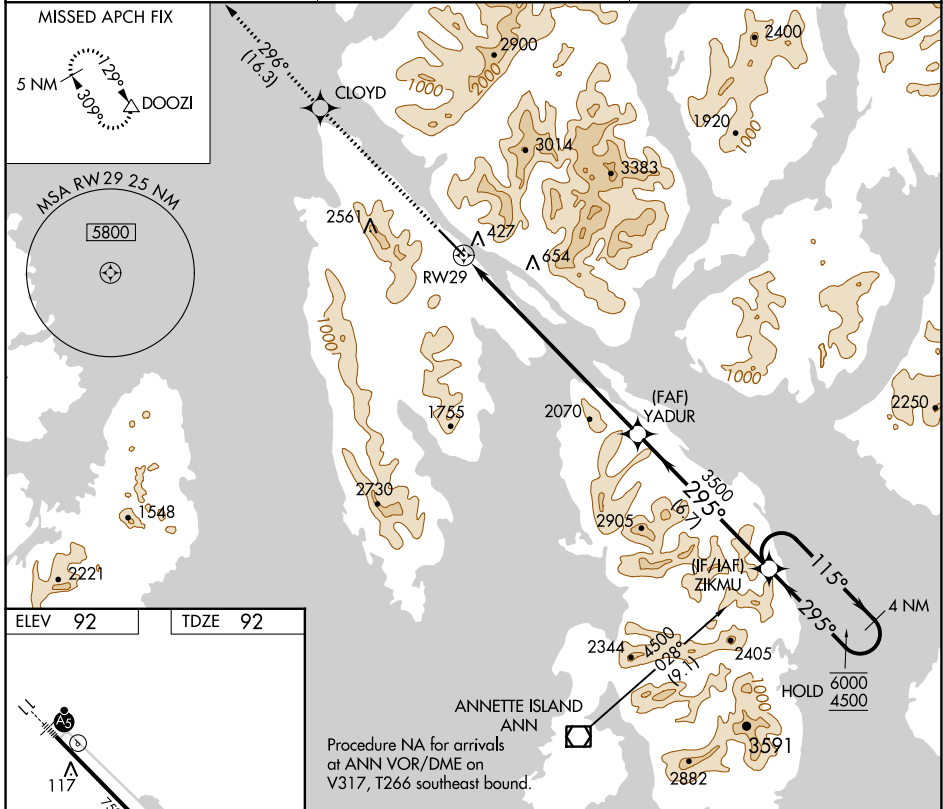
WAAS CH <b>40142</b> <b>W29A</b>	APP CRS <b>295°</b>	Rwy Idg TDZE Apt Elev	<b>7500</b> <b>92</b> <b>92</b>
--	------------------------	-----------------------------	---------------------------------------

# RNAV (GPS) RWY 29

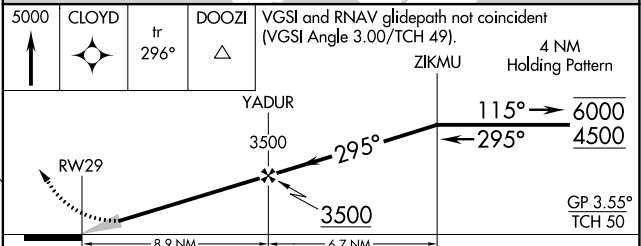
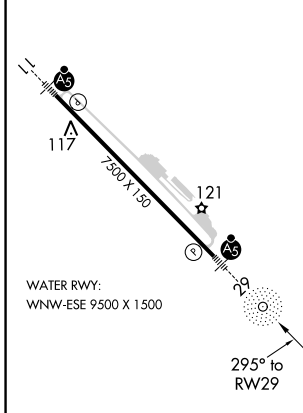
KETCHIKAN INTL (KTN)(PAKT)

RNP APCH.	MALS R	MISSED APPROACH: Climb to 5000 direct CLOYD and on track 296° to DOOZI and hold. *Missed approach requires minimum climb of 425 feet per NM to 2160; If unable to meet climb gradient, see RNAV (GPS)-B.
NA For inop ALS, increase all Cats visibility to 1¼ SM.		

AFIS <b>134.45</b>	ANCHORAGE CENTER <b>118.5 284.6</b>	KETCHIKAN RADIO <b>123.6 (CTAF) 0</b>
-----------------------	--	--



ELEV 92	TDZE 92
---------	---------



CATEGORY	A	B	C	D
LPV DA*	722-1¾ 630 (700-1¾)			NA

AK, 16 MAY 2024 to 11 JUL 2024

AK, 16 MAY 2024 to 11 JUL 2024