

WAAS CH <b>86732</b> <b>W31A</b>	APP CRS <b>314°</b>	Rwy Idg TDZE Apt Elev	<b>4602</b> <b>1137</b> <b>1137</b>
--	------------------------	-----------------------------	---

# RNAV (GPS) RWY 31

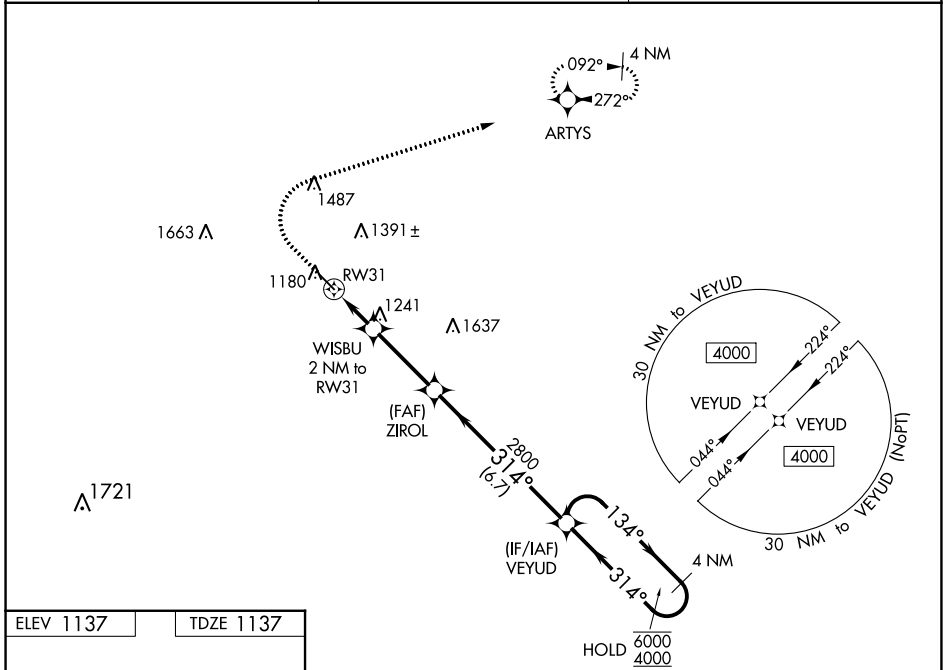
IOWA FALLS MUNI (IF'A)

RNP APCH - GPS.

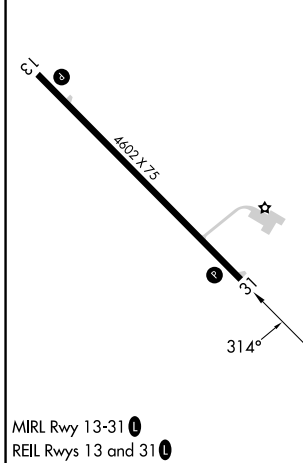
**⚠** Rwy 31 helicopter visibility reduction below 1 SM NA. For uncompensated Baro-VNAV systems, LNAV/VNAV NA below -17°C or above 54°C. Straight-in Rwy 31 NA at night, Circling Rwy 31 NA at night.

**MISSED APPROACH:** Climb to 1600 then climbing right turn to 4000 direct ARTYS and hold, continue climb-in-hold to 4000.

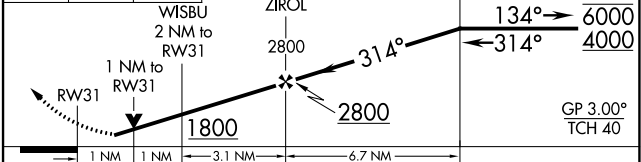
AWOS-3 <b>120.425</b>	WATERLOO APP CON ★ <b>118.9</b>	UNICOM <b>122.8 (CTAF) 0</b>
--------------------------	------------------------------------	---------------------------------



ELEV 1137	TDZE 1137
-----------	-----------



1600 4000 ARTYS VGSI and RNAV glidepath not coincident (VGSI Angle 3.00/TCH 44). 4 NM Holding Pattern



CATEGORY	A	B	C	D
LPV DA		1387-1	250 (300-1)	
LNAV/VNAV DA		1398-1	261 (300-1)	
LNAV MDA		1500-1	363 (400-1)	
<b>C</b> CIRCLING	1540-1 403 (500-1)	1620-1 483 (500-1)	1760-1¾ 623 (700-1¾)	1800-2 663 (700-2)

IOWA FALLS, IOWA  
Amdt 2B 16MAY24

42°28'N-93°16'W

# RNAV (GPS) RWY 31

NC-3, 13 JUN 2024 to 11 JUL 2024

NC-3, 13 JUN 2024 to 11 JUL 2024