

APP CRS <b>012°</b>	Rwy Idg <b>5004</b>
	TDZE <b>278</b>
	Apt Elev <b>278</b>

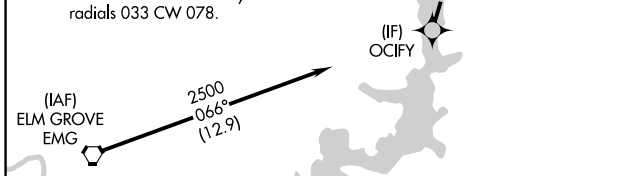
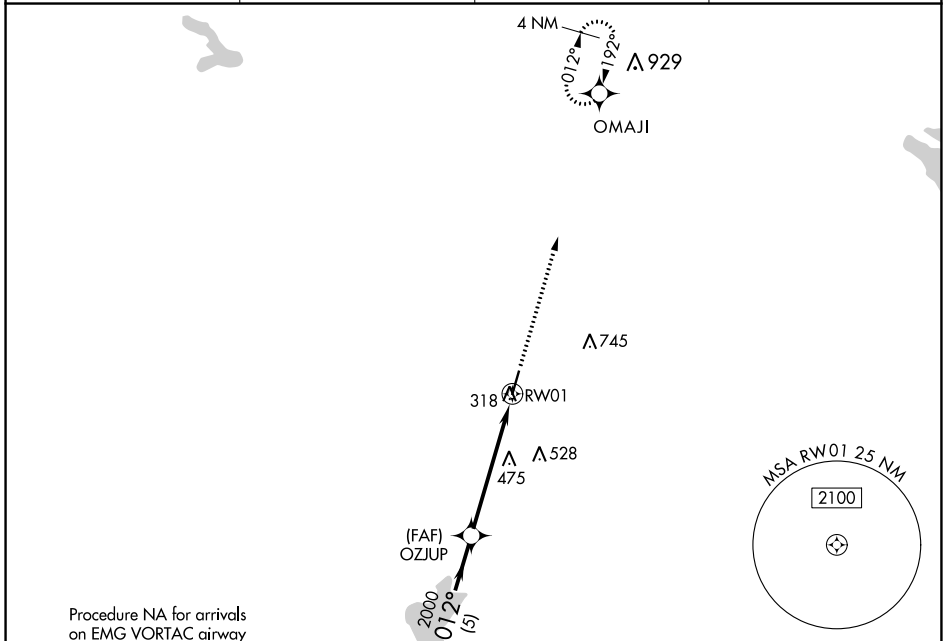
# RNAV (GPS) RWY 1

MINDEN (MNE)

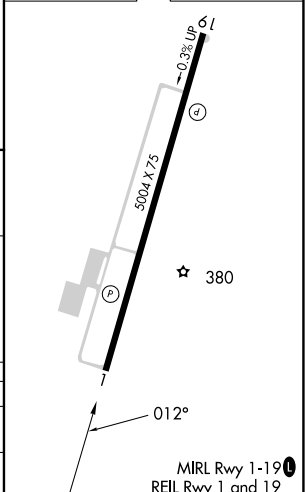
**⚠** When VGSI inop, procedure NA at night. DME/DME RNP-0.3 NA. Helicopter visibility reduction below 1 SM NA. When local altimeter setting not received, use Barksdale AFB altimeter setting; increase all MDA 80 feet, increase LNAV visibility Cats C/D ½ SM and Circling visibility Cats C/D ¼ SM.

**MISSED APPROACH:** Climb to 2500 direct OMAJI and hold.

AWOS-3PT <b>119.325</b>	SHREVEPORT APP CON <b>123.75 360.725</b>	GCO <b>135.075</b>	UNICOM <b>122.8 (CTAF)</b>
----------------------------	---	-----------------------	-------------------------------



ELEV 278	TDZE 278
----------	----------



CATEGORY	A	B	C	D
LNAV MDA	780-1	502 (600-1)	780-1 <sup>3</sup> / <sub>8</sub>	502 (600-1 <sup>3</sup> / <sub>8</sub> )
CIRCLING	780-1 502 (600-1)	820-1 542 (600-1)	1060-2 <sup>1</sup> / <sub>4</sub> 782 (800-2 <sup>1</sup> / <sub>4</sub> )	1060-2 <sup>1</sup> / <sub>2</sub> 782 (800-2 <sup>1</sup> / <sub>2</sub> )

SC-4, 13 JUN 2024 to 11 JUL 2024

SC-4, 13 JUN 2024 to 11 JUL 2024