

WAAS CH <b>93531</b> <b>W13A</b>	APP CRS <b>137°</b>	Rwy Idg TDZE Apt Elev	<b>3700</b> <b>3279</b> <b>3279</b>
--	------------------------	-----------------------------	---

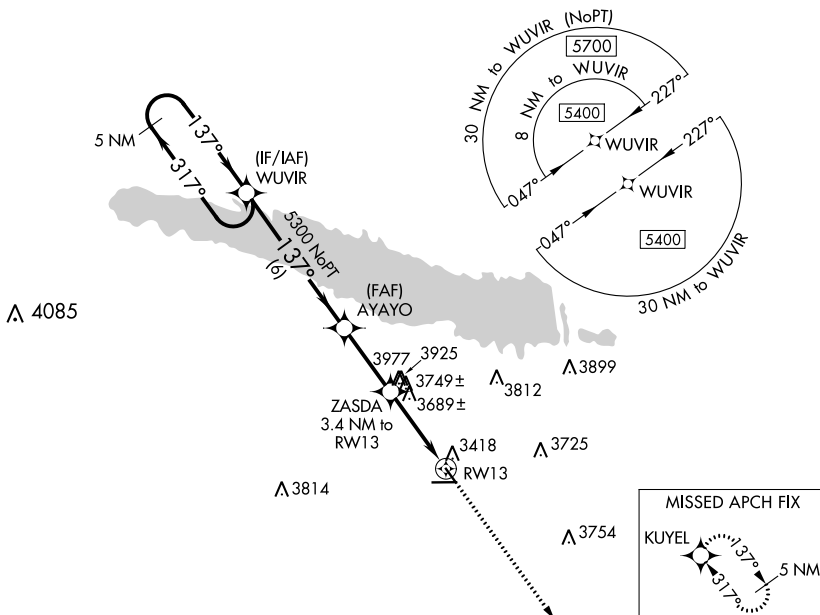
# RNAV (GPS) RWY 13

SEARLE FLD (OGA)

RNP APCH.		MISSED APPROACH: Climb to 5500 direct KUYEL and hold.
<p><b>▽</b> When local altimeter setting not received, use Imperial altimeter setting and increase all MDA 100 feet, increase LP, LNAV and Circling Cat B visibility to 1¼. VDP NA with Imperial altimeter setting.</p>	AWOS-3 <b>121.275</b>	DENVER CENTER <b>132.7 397.85</b>
	UNICOM <b>122.8 (CTAF) 0</b>	

NC-2, 13 JUN 2024 to 11 JUL 2024

NC-2, 13 JUN 2024 to 11 JUL 2024



5 NM Holding Pattern		WUVIR		VGSi and descent angles not coincident (VGSi Angle 3.50/TCH 40).		5500 KUYEL	
5400 ← 317°		→ 137°		137°		↑	
5300		AYAYO		ZASDA		5102 X 75	
6 NM		2.8 NM		1.6 NM		0.2% UP	
				3.16° TCH 40		0.3% UP	
				3.4 NM to RW13		RW13	
				1.8 NM to RW31		26	
				4460		8	
CATEGORY	A	B	C	D	MRL Rwy 8-26 and 13-31 0		
LP MDA	3940-1	661 (700-1)	NA				
LNAV MDA	4000-1	721 (800-1)	NA				
CIRCLING	4000-1	721 (800-1)	NA				