

(INDIE8.INDIE) 21280

AL-6079 (FAA)

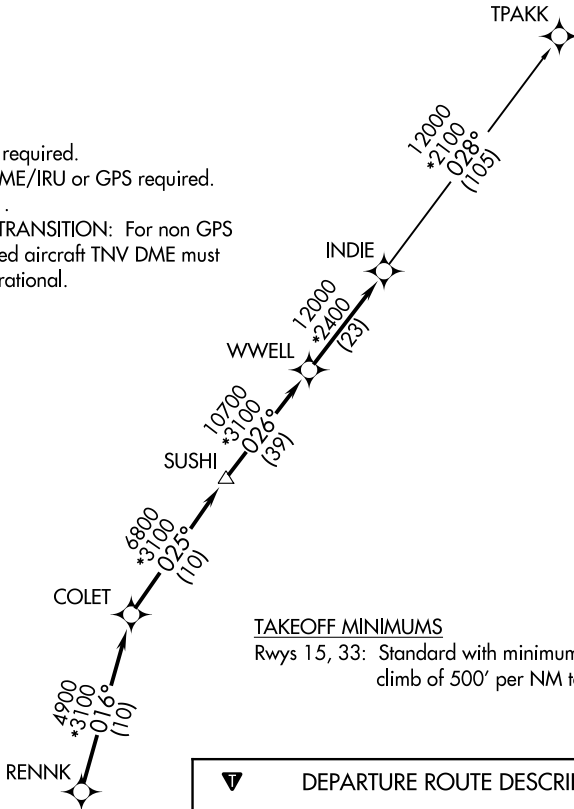
WEST HOUSTON (IWS)  
HOUSTON, TEXAS

# INDIE EIGHT DEPARTURE (RNAV)

CLNC DEL  
121.15  
CTAF  
123.05  
HOUSTON DEP CON  
123.8 257.7

**TOP ALTITUDE:  
ASSIGNED BY ATC**

- NOTE: RADAR required.
- NOTE: DME/DME/IRU or GPS required.
- NOTE: RNAV 1.
- NOTE: TPAKK TRANSITION: For non GPS equipped aircraft TNV DME must be operational.



### TAKEOFF MINIMUMS

Rwys 15, 33: Standard with minimum climb of 500' per NM to 620.



### DEPARTURE ROUTE DESCRIPTION

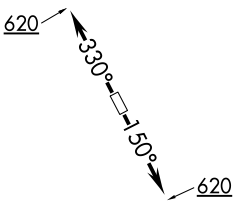
**TAKEOFF RUNWAY 15:** Climb on heading 150° to 620 for RADAR vectors to RENNK, then . . . .

**TAKEOFF RUNWAY 33:** Climb on heading 330° to 620 for RADAR vectors to RENNK, then . . . .

. . . . on track 016° to COLET, then on track 025° to SUSHI, then on track 026° to WWELL, then on track 026° to INDIE, then on (transition).

Maintain ATC assigned altitude. Expect filed altitude 10 minutes after departure.

TPAKK TRANSITION (INDIE8.TPAKK)



NOTE: Chart not to scale.

SC-5, 13 JUN 2024 to 11 JUL 2024

SC-5, 13 JUN 2024 to 11 JUL 2024

INDIE EIGHT DEPARTURE (RNAV)  
(INDIE8.INDIE) 07OCT21

HOUSTON, TEXAS  
WEST HOUSTON (IWS)