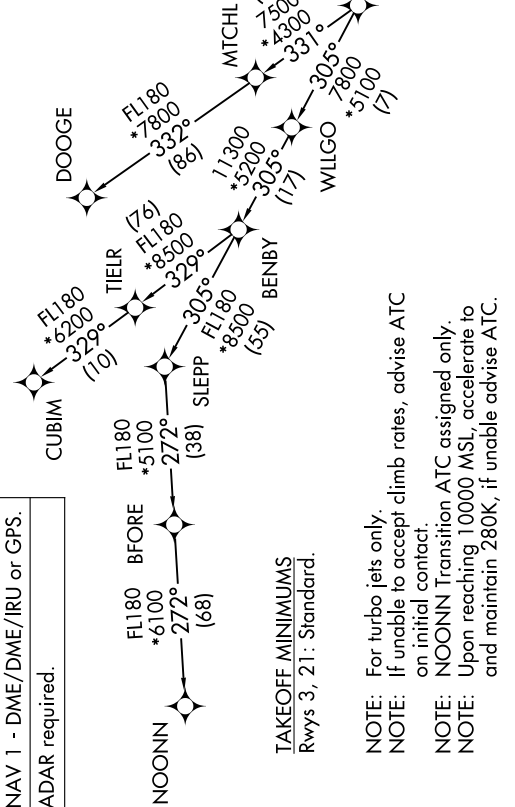


JOJO FIVE DEPARTURE (RNAV)

CHARLOTTE DEP CON
120.05 257.2
ASOS
135.725
CLNC DEL
127.2
UNICOM (CTAF)
123.0

**TOP ALTITUDE:
3000**



TAKEOFF MINIMUMS
Rwys 3, 21: Standard.

- NOTE: For turbo jets only.
- NOTE: If unable to accept climb rates, advise ATC on initial contact.
- NOTE: NOONN Transition ATC assigned only.
- NOTE: Upon reaching 10000 MSL, accelerate to and maintain 280K, if unable advise ATC.

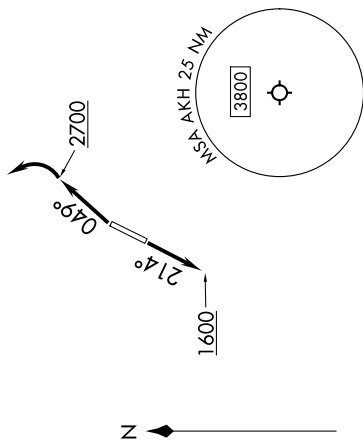
DEPARTURE ROUTE DESCRIPTION

TAKEOFF RUNWAY 3: Climb on heading 049° to 2700 before turning left, then on heading assigned by ATC, thence. . . .

TAKEOFF RUNWAY 21: Climb on heading 214° to 1600 before proceeding north, then on heading assigned by ATC, thence. . . .

. . . on RADAR vectors to WAYDS, then on depicted route to JOJO. Then on assigned transition. Maintain 3000, expect filed altitude within 10 minutes after departure.

CUBIM TRANSITION (JOJO5.CUBIM)
DOOGE TRANSITION (JOJO5.DOOGE)
NOONN TRANSITION (JOJO5.NOONN)



NOTE: Chart not to scale.

SE-2, 13 JUN 2024 to 11 JUL 2024

SE-2, 13 JUN 2024 to 11 JUL 2024

JOJO FIVE DEPARTURE (RNAV)