

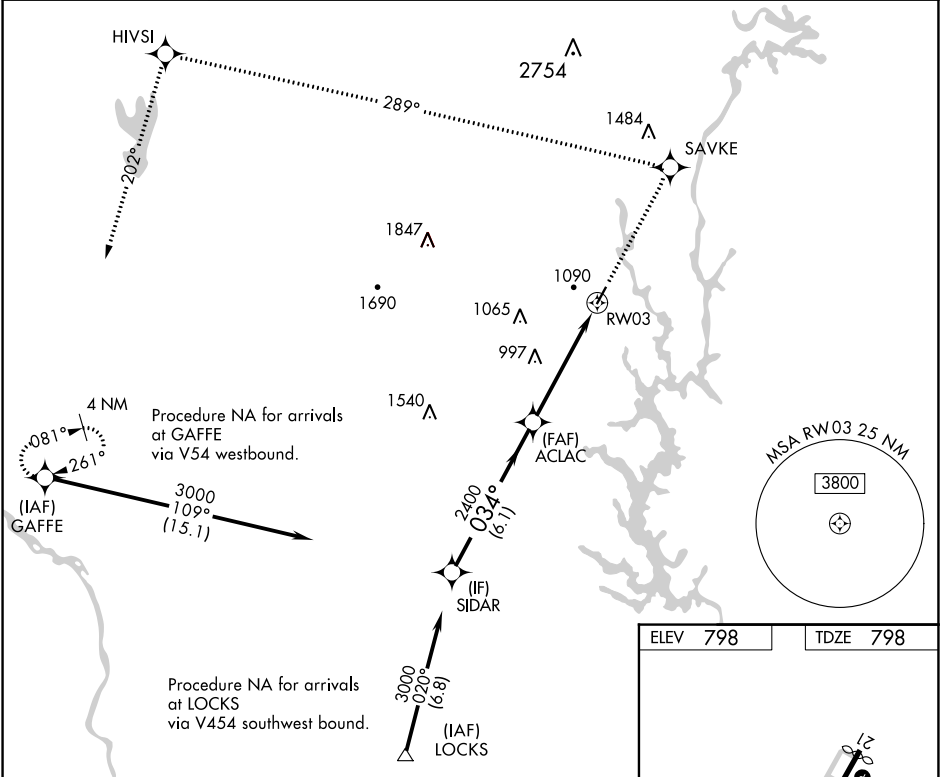
WAAS CH 90302 W03A	APP CRS 034°	Rwy Idg TDZE Apt Elev	3769 798 798
--	------------------------	-----------------------------	---

RNAV (GPS) RWY 3

GASTONIA MUNI (AKH)

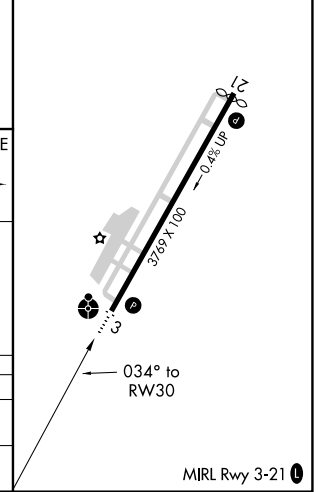
RNP APCH. ▼ If local altimeter setting not received, use Charlotte Douglas Intl altimeter setting and increase all DAs/MDAs 40 feet. Inoperative table does not apply.	ODALS ⬇	MISSED APPROACH: Climb to 3200 direct SAVKE and via 289° track to HIVSI and 202° track to GAFFE and hold.
---	------------	---

ASOS 135.725	CHARLOTTE APP CON 120.05 257.2	CLNC DEL 127.2	UNICOM 123.0 (CTAF) 0
------------------------	--	--------------------------	---------------------------------



ELEV 798	TDZE 798
----------	----------

VGSI and RNAV glidepath not coincident (VGSI Angle 3.00/TCH 26).	3200 SAVKE	HIVSI	GAFFE	
Procedure Turn NA	↑	tr 289°	tr 202°	
GP 3.00° TCH 40	SIDAR 3000	ACLAC 2400	RW03	
	034°			
	6.1 NM	4.8 NM		
CATEGORY	A	B	C	D
LPV DA	1118-1¼	320 (400-1¼)		NA
LNAV MDA	1440-1	642 (700-1)	1440-1¾ 642 (700-1¾)	NA



SE-2, 13 JUN 2024 to 11 JUL 2024

SE-2, 13 JUN 2024 to 11 JUL 2024