

WAAS CH 81824 W01A	APP CRS 011°	Rwy Idg TDZE 253 Apt Elev 265	6008
--	------------------------	---	-------------

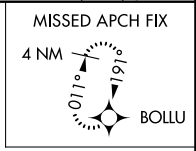
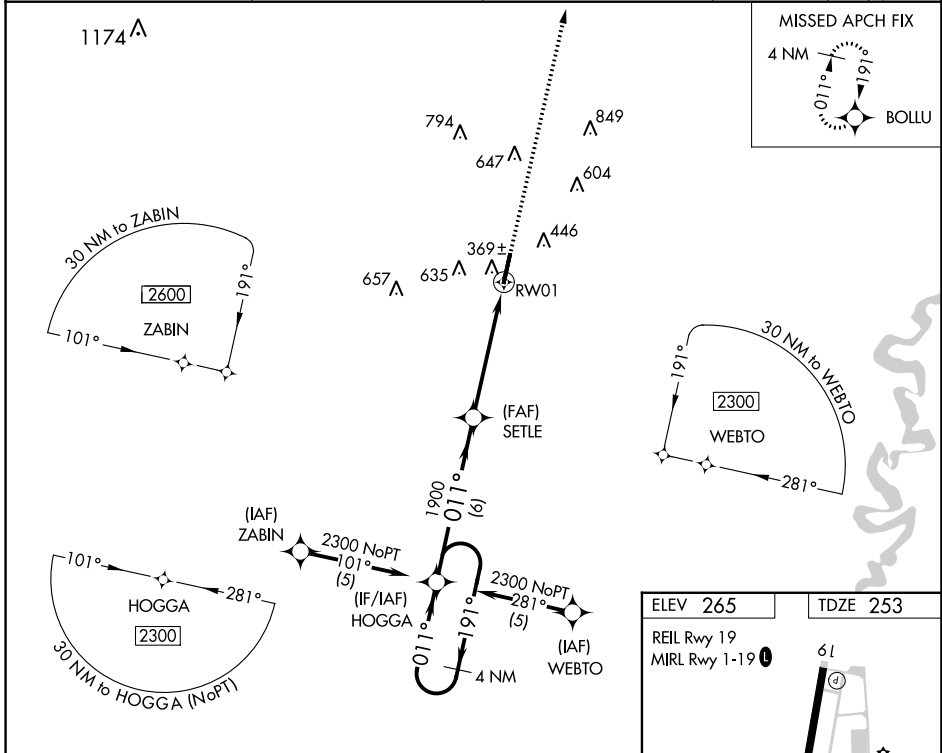
RNAV (GPS) RWY 1

SEARCY RGNL (SRC)

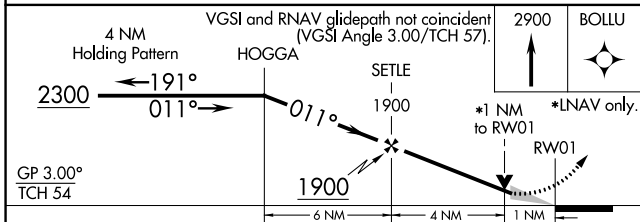
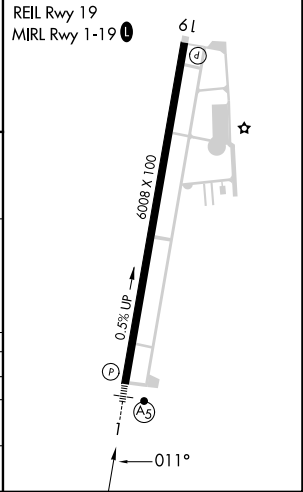
⚠ Circling NA for Cats B and C west of Rwy 1-19. DME/DME RNP-0.3 NA. VDP NA with Bill and Hillary Clinton Ntl/Adams Fld altimeter setting. When local altimeter setting not received, use Bill and Hillary Clinton Ntl/Adams Fld altimeter setting: increase LPV DA to 662 feet and all Cats visibility 1/4 SM; increase all MDAs 100 feet and LNAV and Circling Cat C visibility 1/2 SM. For inop ALS, increase LPV visibility to 7/8 SM. For inop ALS, when using Bill and Hillary Clinton Ntl/Adams Fld altimeter setting, increase LPV all Cats visibility to 1 1/8 SM.

MALSR MISSED APPROACH: Climb to 2900 direct BOLLU and hold.

AWOS-3PT 128.325	LITTLE ROCK APP CON 119.75 291.775	CLNC DEL 119.75	UNICOM 122.7 (CTAF)
----------------------------	--	---------------------------	-------------------------------



ELEV 265	TDZE 253
----------	----------



CATEGORY	A	B	C	D
LPV DA		573-1/2	320 (400-1/2)	NA
LNAV MDA	620-1/2	367 (400-1/2)	620-5/8 367 (400-5/8)	NA
CIRCLING	760-1	495 (500-1)	780-1/2 515 (600-1/2)	NA

SC-1, 13 JUN 2024 to 11 JUL 2024

SC-1, 13 JUN 2024 to 11 JUL 2024