

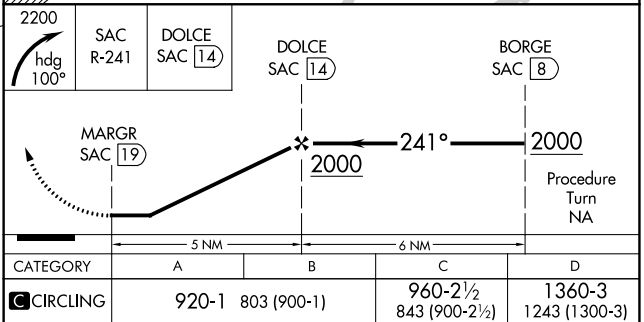
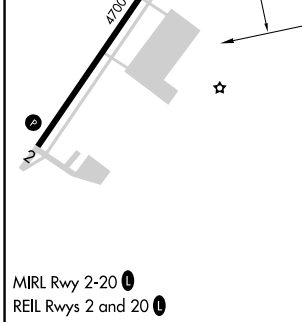
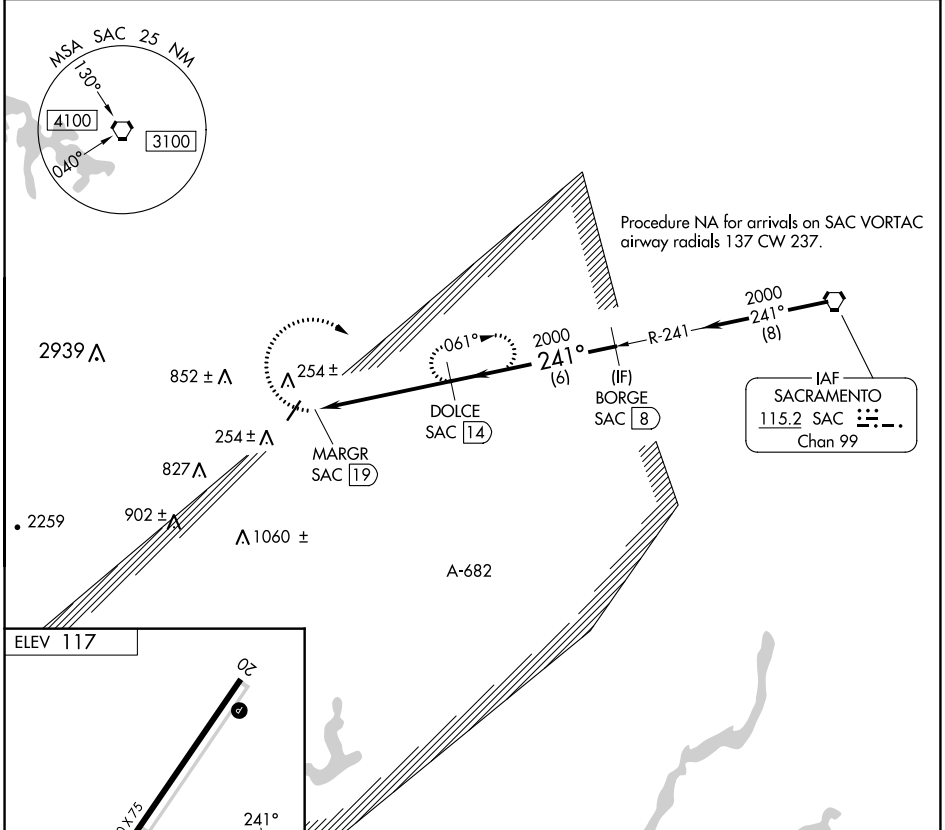
VORTAC SAC <b>115.2</b> Chan <b>99</b>	APP CRS <b>241°</b>	Rwy Idg TDZE Aprt Elev	<b>N/A</b> <b>N/A</b> <b>117</b>
--	------------------------	------------------------------	--

**VOR-A**  
NUT TREE (VCB)

**⚠** Rwy 2 helicopter visibility reduction below 1 SM NA.  
DME required.  
Circling Rwy 2 NA at night.  
Circling NA west of Rwy 2-20.

MISSED APPROACH: Climbing right turn to 2200 on heading 100° and SAC R-241 to DOLCE/14 DME and hold.

ASOS <b>134.75</b>	TRAVIS APP CON <b>128.4 281.45</b>	CTAF <b>122.85</b>
-----------------------	---------------------------------------	-----------------------



SW-2, 13 JUN 2024 to 11 JUL 2024

SW-2, 13 JUN 2024 to 11 JUL 2024