

WAAS CH 49140 W35A	APP CRS 354°	Rwy Idg TDZE 112 Apt Elev 112	6006
--	------------------------	---	-------------

RNAV (GPS) RWY 35

BROOKS COUNTY (BKS)

⚠ For uncompensated Baro-VNAV systems, LNAV/VNAV NA below -15°C (5°F) or above 54°C (130°F). Circling Rwy 14 NA at night. DME/DME RNP-0.3 NA.

MISSED APPROACH: Climb to 3000 direct SALUM and hold.

AWOS-3PT
118.125

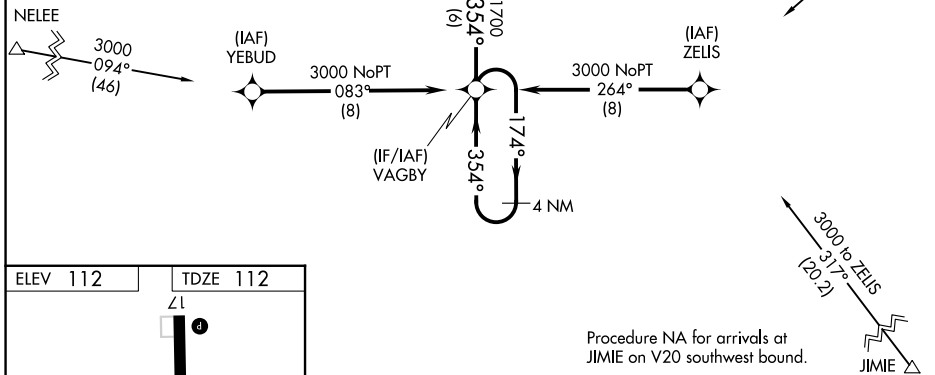
KINGSVILLE APP CON *
119.9 290.45

UNICOM
122.8 (CTAF) 0

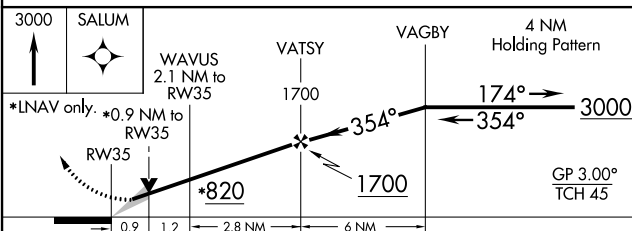
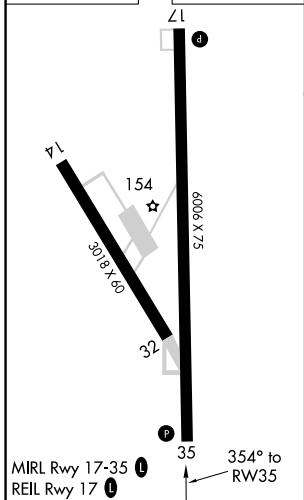
MISSED APCH FIX



Procedure NA for arrivals at NELEE via V17 northwest bound.



ELEV 112	TDZE 112
----------	----------



CATEGORY	A	B	C	D
LPV DA		362-1	250 (300-1)	
LNAV/VNAV DA		362-1	250 (300-1)	
LNAV MDA		440-1	328 (400-1)	
CIRCLING	580-1 468 (500-1)	680-1 568 (600-1)	940-2½ 828 (900-2½)	940-2¾ 828 (900-2¾)

SC-3, 13 JUN 2024 to 11 JUL 2024

SC-3, 13 JUN 2024 to 11 JUL 2024