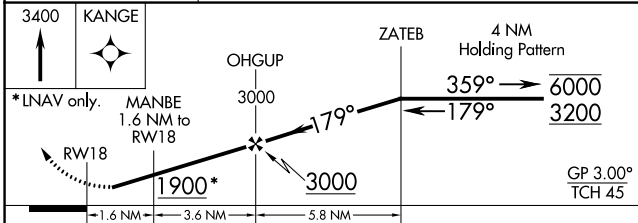
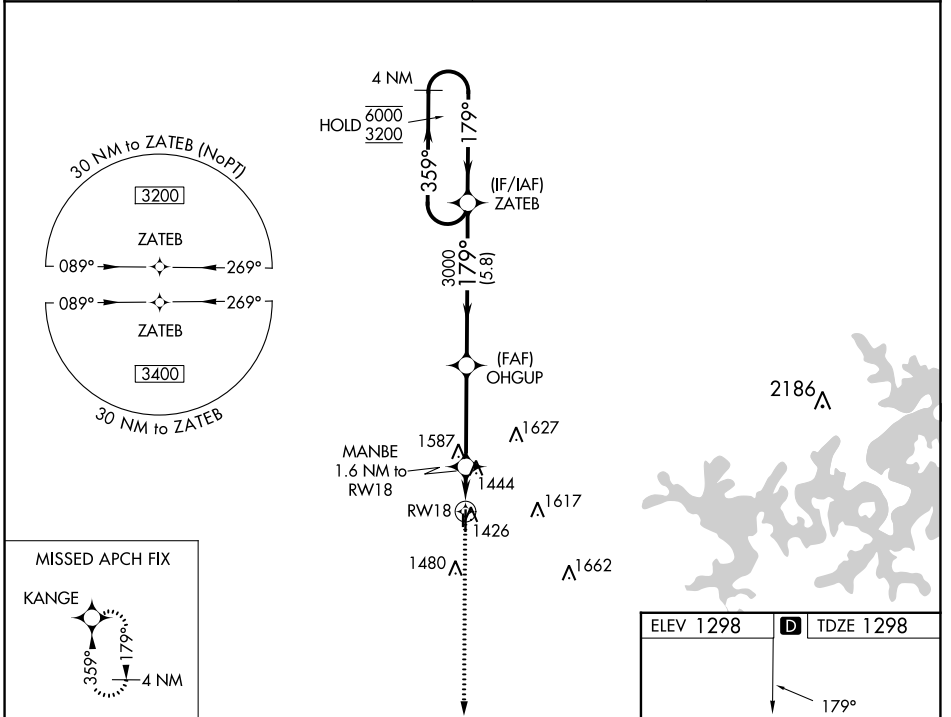


WAAS CH 77830 W18A	APP CRS 179°	Rwy Idg TDZE 1298 Apt Elev 1298
--	------------------------	---

RNAV (GPS) RWY 18

BENTONVILLE MUNI/LOUISE M THADEN FLD (VBT)

RNP APCH.		MISSED APPROACH: Climb to 3400 direct KANGE and hold.	
<p>⚠ Circling NA to Rwy 17 and 35. Rwy 18 helicopter visibility reduction below 3/4 SM NA. For uncompensated Baro-VNAV systems, LNAV/VNAV NA below -17°C or above 54°C.</p>			
AWOS-3PT 134.975	RAZORBACK APP CON ★ 121.0 (WEST) 244.575	CLNC DEL 121.05 263.125	UNICOM 122.975 (CTAF) L



ELEV 1298	D TDZE 1298
<p>MIRL Rwy 18-36 L REL Rwy 18 and 36</p>	

CATEGORY	A	B	C	D
LPV DA	1548-1		250 (300-1)	
LNAV/VNAV DA	1688-1 1/8		390 (400-1 1/8)	
LNAV MDA	1700-1 402 (500-1)		1700-1 1/8 402 (500-1 1/8)	
C CIRCLING	1780-1 482 (500-1)		1920-1 3/4 622 (700-1 3/4) 1940-2 642 (700-2)	

SC-1, 13 JUN 2024 to 11 JUL 2024

SC-1, 13 JUN 2024 to 11 JUL 2024