

APP CRS 224°	Rwy Idg 4001
	TDZE 570
	Apt Elev 570

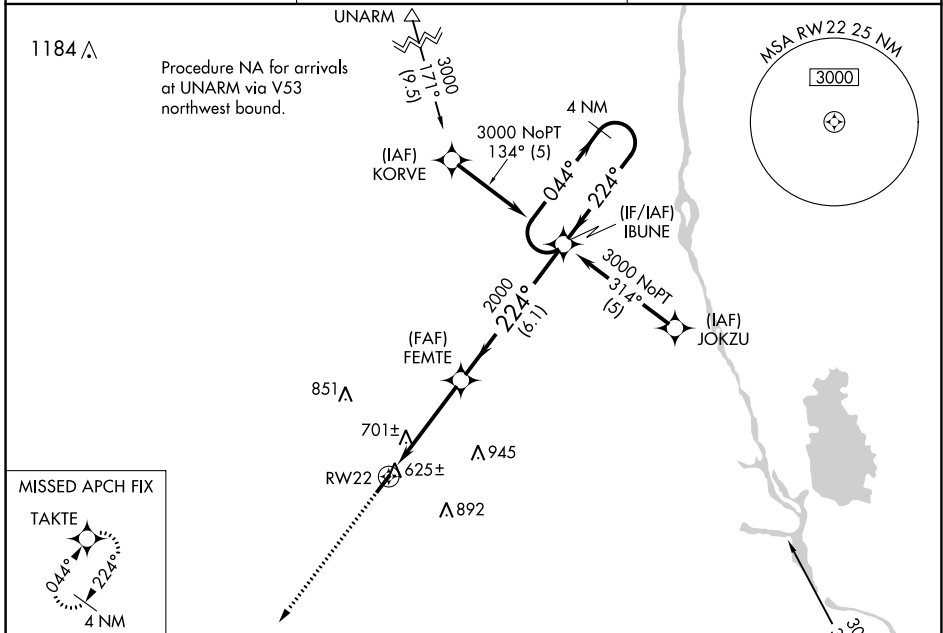
RNAV (GPS) RWY 22

NEWBERRY COUNTY (EOE)

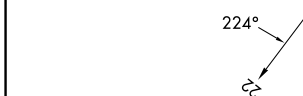
⚠ DME/DME RNP-0.3 NA. When local altimeter setting not received, use Greenwood County altimeter setting and increase all MDA 80 feet. VDP NA when using Greenwood County altimeter setting. Helicopter visibility reduction below 3/4 SM NA.

⚠ MISSED APPROACH: Climb to 3000 direct TAKTE and hold.

AWOS-3 124.275	COLUMBIA APP CON 133.4 285.6	UNICOM 122.8 (CTAF) 0
--------------------------	----------------------------------------	---------------------------------



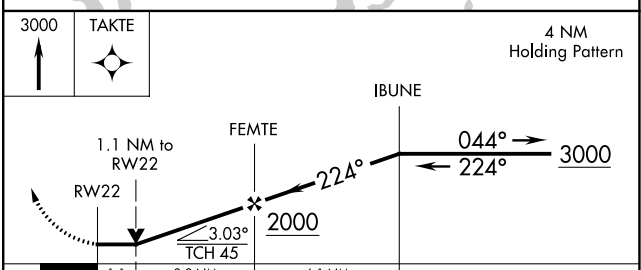
ELEV 570	TDZE 570
----------	----------



Procedure NA for arrivals at WIDER via V53 southeast bound.

WIDER Δ 3000 (16.6) (3.9)

4 NM Holding Pattern



CATEGORY	A	B	C	D
LNAV MDA	960-1	390 (400-1)	NA	
CIRCLING	1080-1 510 (600-1)	1160-1 590 (600-1)	NA	

MIRL Rwy 4-22 **0**

SE-2, 13 JUN 2024 to 11 JUL 2024

SE-2, 13 JUN 2024 to 11 JUL 2024