

| | | |
|-------------|----------|-------------|
| APP CRS | Rwy Idg | 4001 |
| 044° | TDZE | 558 |
| | Apt Elev | 570 |

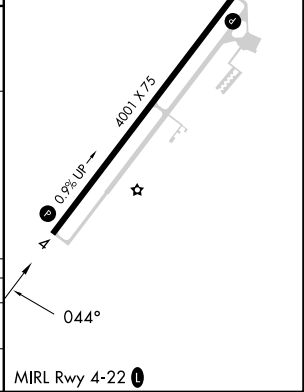
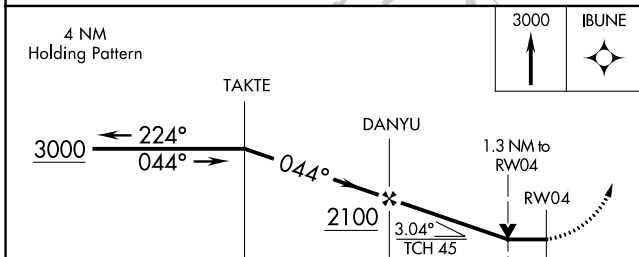
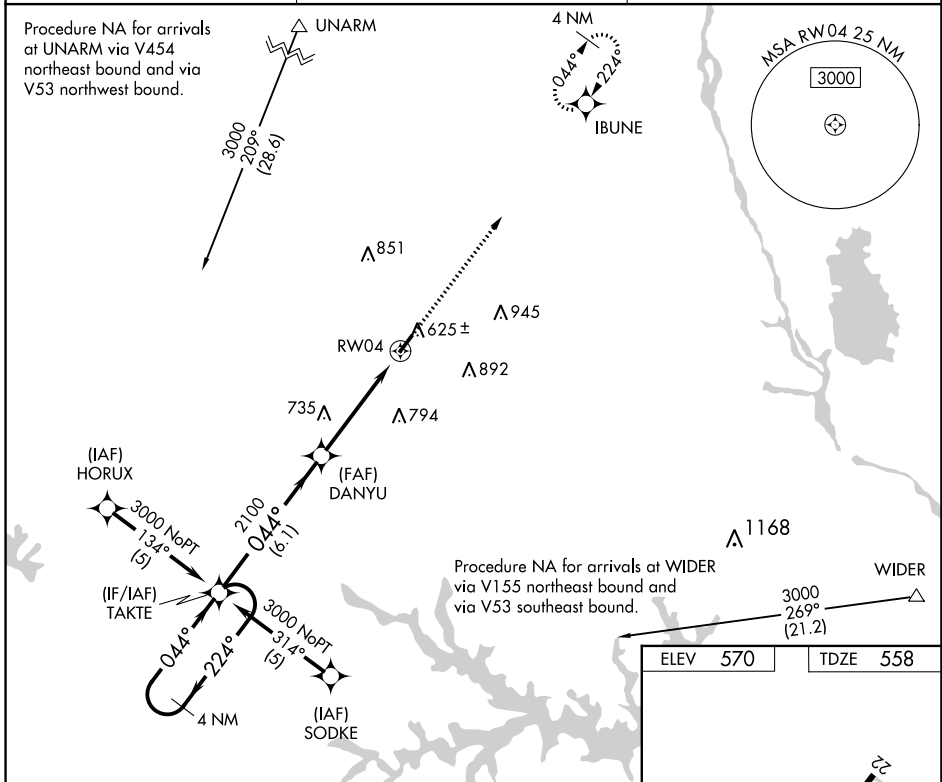
RNAV (GPS) RWY 4

NEWBERRY COUNTY (EOE)

▼ DME/DME RNP-0.3 NA. When local altimeter setting not received, use Greenwood County altimeter setting and increase all MDA 80 feet. VDP NA when using Greenwood County altimeter setting. Helicopter visibility reduction below 3/4 SM NA.

▲ MISSED APPROACH: Climb to 3000 direct IBUNE and hold.

| | | |
|--------------------------|--|---------------------------------|
| AWOS-3 124.275 | COLUMBIA APP CON 133.4 285.6 | UNICOM 122.8 (CTAF) 0 |
|--------------------------|--|---------------------------------|



| CATEGORY | A | B | C | D |
|----------|-----------------------|-----------------------|----|---|
| RNAV MDA | 1000-1 | 442 (500-1) | NA | |
| CIRCLING | 1080-1 510 (600-1) | 1160-1 590 (600-1) | NA | |

SE-2, 13 JUN 2024 to 11 JUL 2024

SE-2, 13 JUN 2024 to 11 JUL 2024