

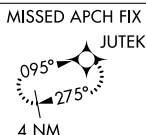
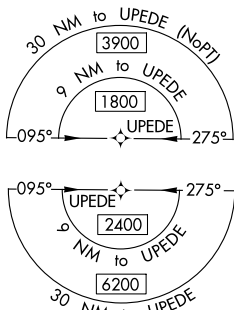
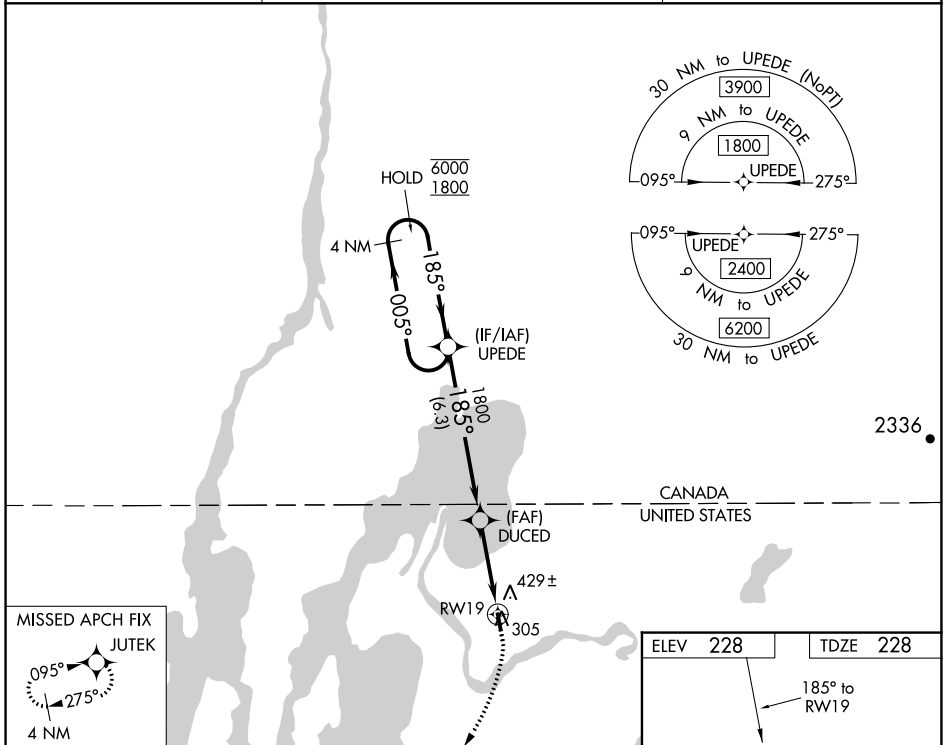
WAAS CH 78122 W19A	APP CRS 185°	Rwy Idg TDZE 228 Apt Elev 228	3001
--	------------------------	---	-------------

RNAV (GPS) RWY 19

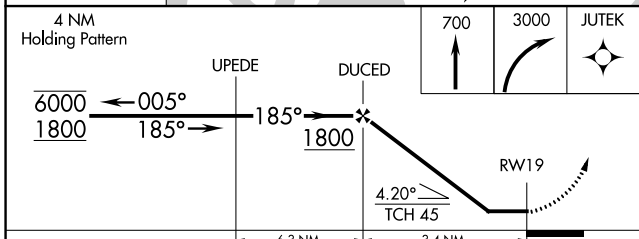
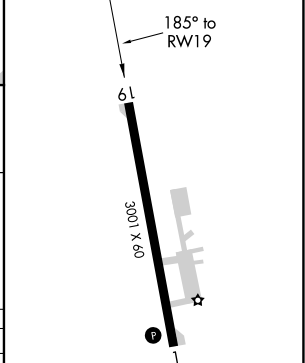
FRANKLIN COUNTY STATE (F'SO)

RNP APCH - GPS.		MISSED APPROACH: Climb to 700 then climbing right turn to 3000 direct JUTEK and hold.
Procedure NA at night. Rwy 19 helicopter visibility reduction below 1 SM NA.		

AWOS-3 119.025	BURLINGTON APP CON* 121.1 (EAST) 278.8 (WEST) 360.8	UNICOM 122.8 (CTAF)
--------------------------	---	-------------------------------



ELEV 228	TDZE 228
-----------------	-----------------



CATEGORY	A	B	C	D
LP MDA	640-1	412 (500-1)	NA	
LNAV MDA	680-1	452 (500-1)	NA	
CIRCLING	760-1 532 (600-1)	960-1 732 (800-1)	NA	

MIRL Rwy 1-19
REIL Rwy 1 and 19

NE-1, 13 JUN 2024 to 11 JUL 2024

NE-1, 13 JUN 2024 to 11 JUL 2024