

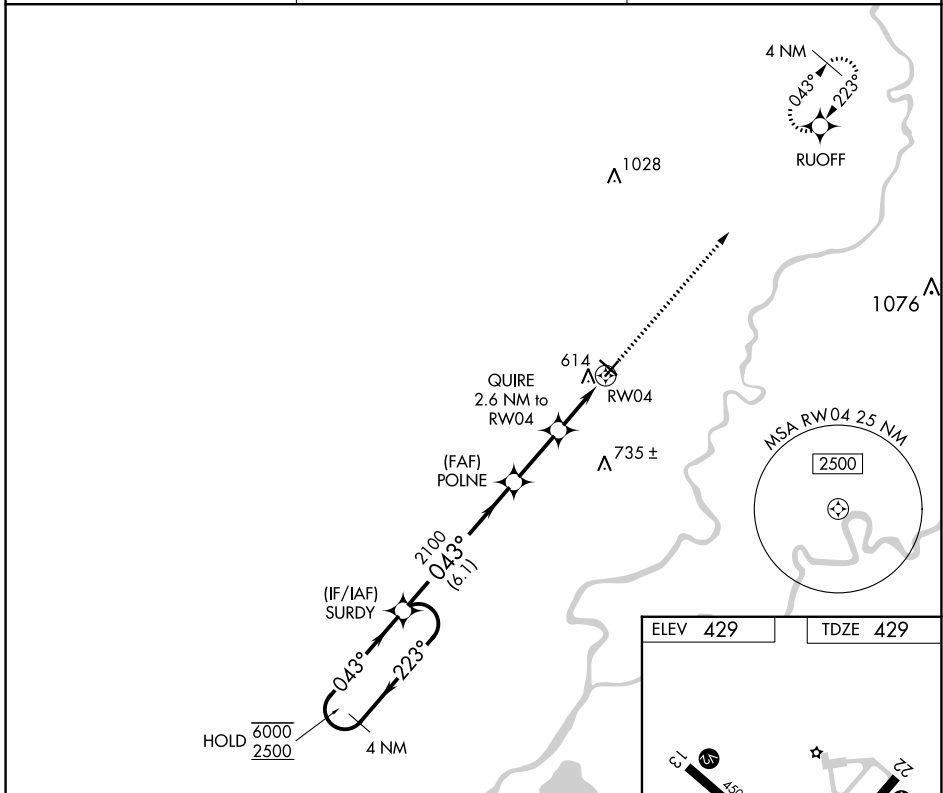
APP CRS	Rwy Idg	<b>4000</b>
<b>043°</b>	TDZE	<b>429</b>
	Apt Elev	<b>429</b>

# RNAV (GPS) RWY 4

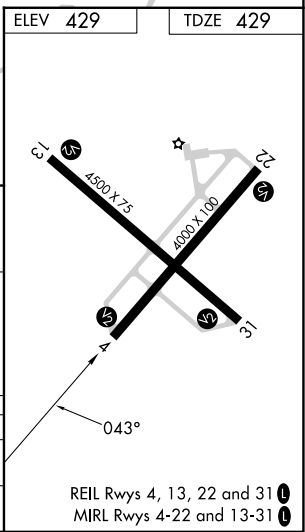
MOUNT CARMEL MUNI (AJG)

RNP APCH.	MISSED APPROACH: Climb to 2500 direct RUOFF and hold.
▼ Rwy 4 helicopter visibility reduction below 3/4 SM NA. For uncompensated Baro-VNAV systems, LNAV/VNAV NA below -15°C or above 54°C.	

AWOS-3 <b>134.9</b>	EVANSVILLE APP CON★ <b>125.6 343.7</b>	UNICOM <b>122.7 (CTAF)</b>
------------------------	---	-------------------------------



4 NM Holding Pattern	SURDY			VGSI and RNAV glidepath not coincident (VGSI Angle 3.00/TCH 23).	2500 RUOFF
6000 ← 223°	← 043° →	043°	POLNE	QUIRE 2.6 NM to RWY 04	*LNAV only
2500		2100	*1300	*1.5 NM to RWY 04	
GP 3.00°					
TCH 40					
	← 6.1 NM →	← 2.5 NM →	← 1.1 NM →	← 1.5 NM →	
CATEGORY	A	B	C	D	
LNAV/VNAV	DA	937-1 3/4 508 (600-1 3/4)		NA	
LNAV MDA	920-1	491 (500-1)	920-1 1/4 491 (500-1 1/4)	NA	



REIL Rwy 4, 13, 22 and 31  
MIRL Rwy 4-22 and 13-31

EC-3, 13 JUN 2024 to 11 JUL 2024

EC-3, 13 JUN 2024 to 11 JUL 2024