

NDB ATA <b>347</b>	APP CRS <b>053°</b>	Rwy ldg <b>3800</b> TDZE <b>280</b> Apt Elev <b>280</b>
-----------------------	------------------------	---------------------------------------------------------------

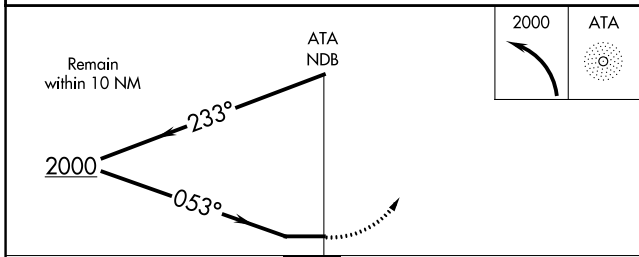
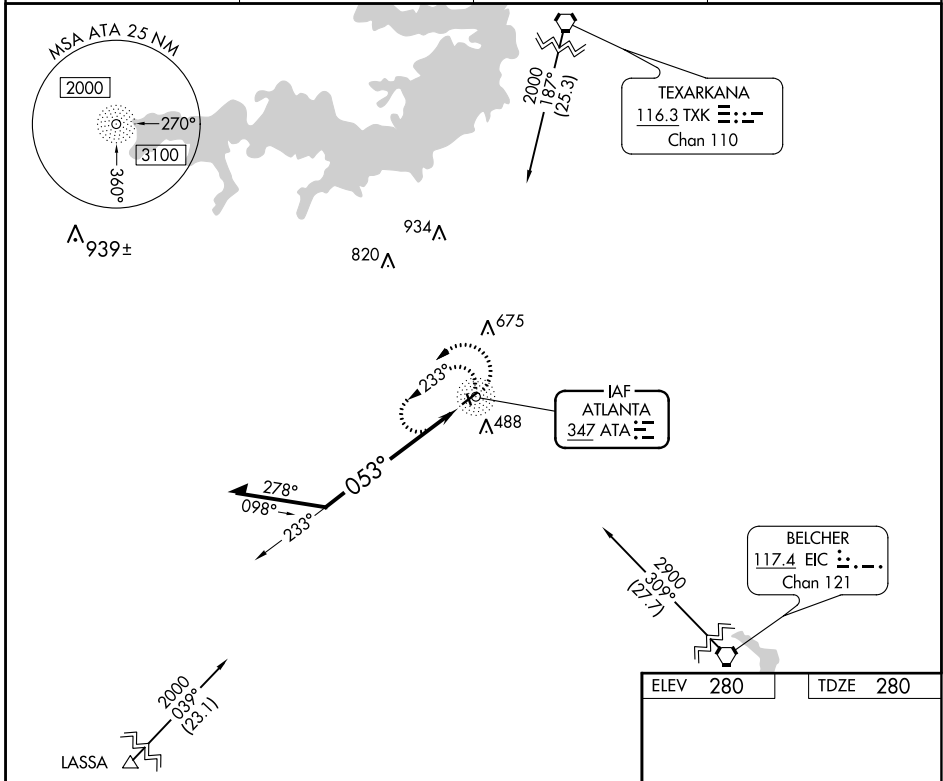
# NDB RWY 5

HALL-MILLER MUNI (ATA)

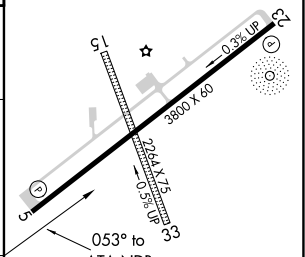
**▼** Helicopter visibility reduction below 1 SM NA. Use Texarkana altimeter setting, when not received use Mount Pleasant altimeter setting and increase all MDA 40 feet and all Cat B visibility 1/4 mile. Procedure NA at night.

**▲ NA** MISSED APPROACH: Climbing left turn to 2000 in ATA NDB holding pattern.

AWOS-3 <b>118.250</b>	TXK ASOS <b>120.2</b>	FORT WORTH CENTER <b>123.925 269.475</b>	CTAF <b>122.9</b>
--------------------------	--------------------------	---------------------------------------------	----------------------



ELEV <b>280</b>	TDZE <b>280</b>
-----------------	-----------------



CATEGORY	A	B	C	D
S-5	1220-1¼	940 (1000-1¼)		NA
CIRCLING	1220-1¼	940 (1000-1¼)		NA

MIRL Rwy 5-23

REIL Rws 5 and 23

SC-2, 13 JUN 2024 to 11 JUL 2024

SC-2, 13 JUN 2024 to 11 JUL 2024