

| | | |
|-------------|----------|-------------|
| APP CRS | Rwy Idg | 3800 |
| 048° | TDZE | 280 |
| | Apt Elev | 280 |

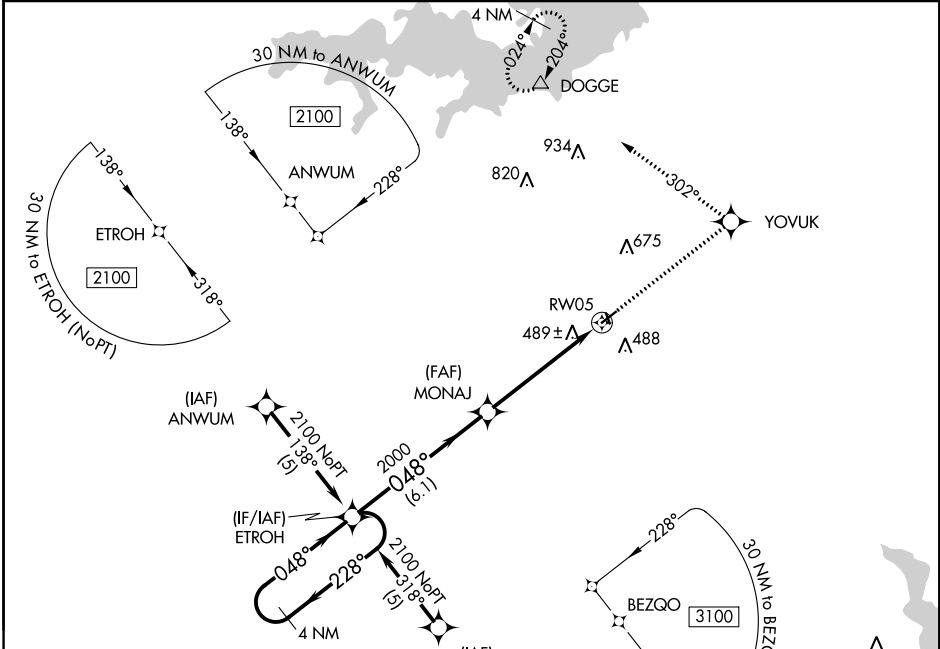
RNAV (GPS) RWY 5

HALL-MILLER MUNI (ATA)

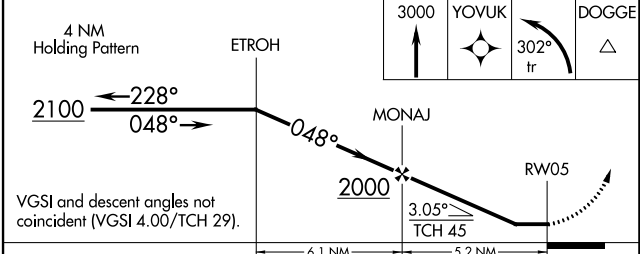
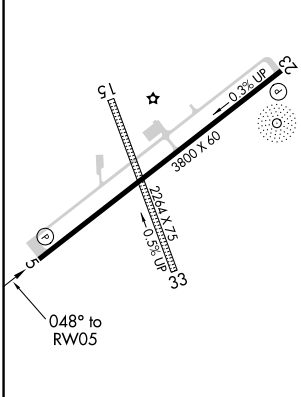
RNP APCH.
 ▼ Rwy 5 helicopter visibility reduction below 3/4 SM NA. Use Texarkana altimeter setting, when not received use Mount Pleasant altimeter setting and increase all MDA 40 feet.
 ▲ NA

MISSED APPROACH: Climb to 3000 direct YOYUK and left turn via 302° track to DOGGE and hold.

| | | | |
|--------------------------|--------------------------|---|----------------------|
| AWOS-3 118.250 | TXK ASOS 120.2 | FORT WORTH CENTER 123.925 269.475 | CTAF 122.9 |
|--------------------------|--------------------------|---|----------------------|



| | |
|----------|----------|
| ELEV 280 | TDZE 280 |
|----------|----------|



| | | | | |
|----------|-------|-------------|----|---|
| CATEGORY | A | B | C | D |
| LNAV MDA | 860-1 | 580 (600-1) | NA | |

MIRL Rwy 5-23
 REIL Rwy 5 and 23

SC-2, 13 JUN 2024 to 11 JUL 2024

SC-2, 13 JUN 2024 to 11 JUL 2024