

APP CRS **033°**  
 Rwy Idg **5132**  
 TDZE **4793**  
 Apt Elev **4831**

# RNAV (GPS) RWY 3

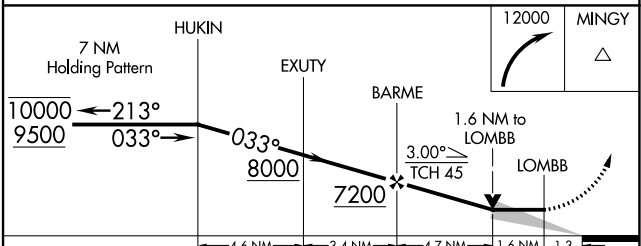
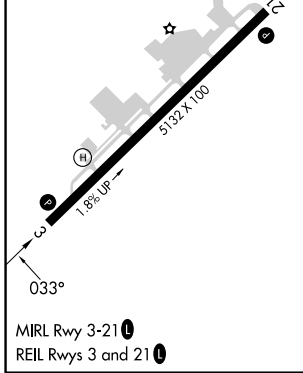
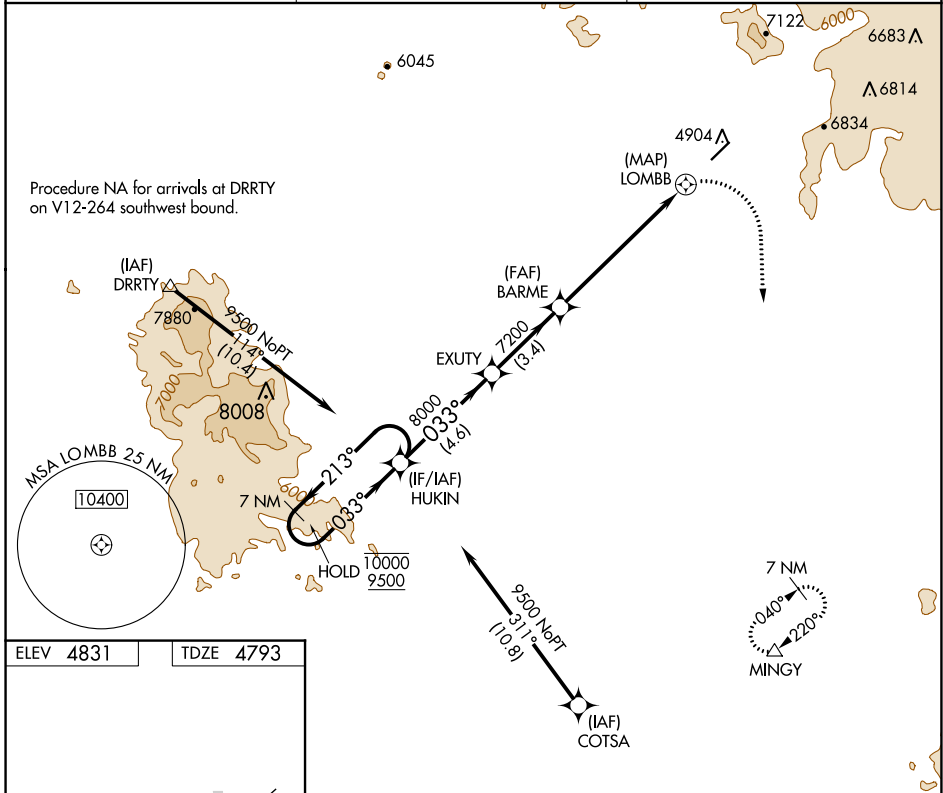
SEDONA (SE/Z)

RNP APCH - GPS.

⚠ Circling NA northwest of Rwy 3-21. Circling Rwy 21 NA at night. When local altimeter not received, procedure NA.

MISSED APPROACH: Climbing right turn to 12000 direct MINGY and hold, continue climb-in-hold to 12000

AWOS-3PT **118.525**      PHOENIX APP CON **126.375 236.775**      UNICOM **123.0 (CTAF) 0**



CATEGORY	A	B	C	D
LNNAV MDA	5720-1½ 927 (1000-1½)	5740-1½ 947 (1000-1½)	6460-3 1667 (1700-3)	6640-3 1847 (1900-3)
<input checked="" type="checkbox"/> CIRCLING	5720-1½ 889 (900-1½)	5880-1½ 1049 (1100-1½)	7080-3 2249 (2300-3)	NA

SW-4, 13 JUN 2024 to 11 JUL 2024

SW-4, 13 JUN 2024 to 11 JUL 2024