

# ILS or LOC RWY 4

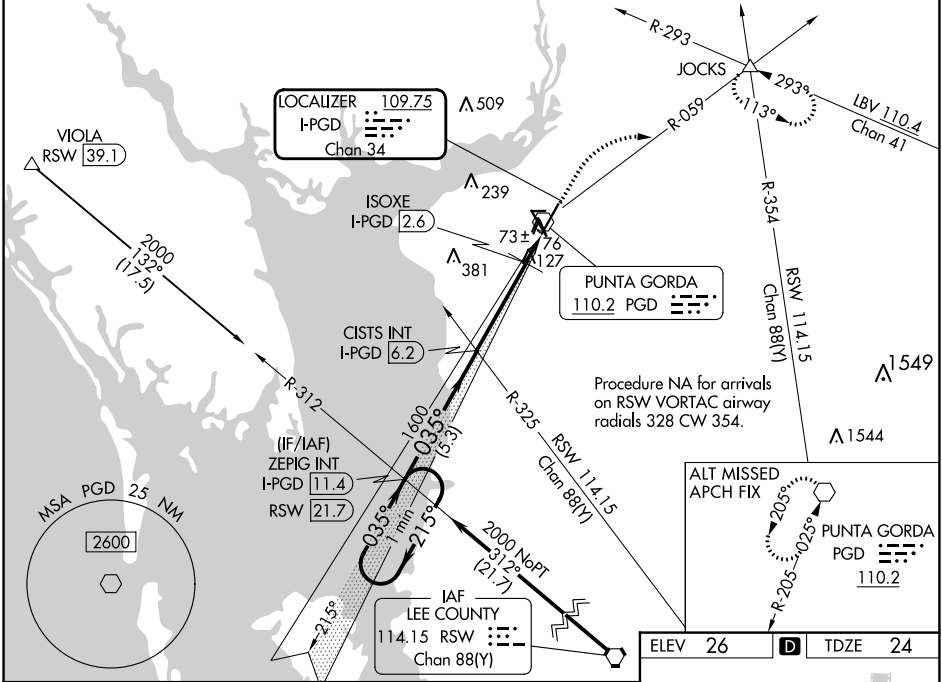
PUNTA GORDA (PGD)

LOC/DME I-PGD <b>109.75</b> Chan <b>34</b>	APP CRS <b>035°</b>	Rwy Idg <b>7193</b> TDZE <b>24</b> Apt Elev <b>26</b>
--	------------------------	---

⚠ When local altimeter setting not received, use Page Fld altimeter setting and increase DA to 274 feet and all MDAs 60 feet; increase S-LOC 4 Cats C and D visibility 1/8 SM, and Circling Cats C and D visibility 1/4 SM; ISOXE fix minimums: increase S-LOC 4 Cats C and D visibility 1/8 SM, and Circling Cats C and D visibility 1/4 SM.

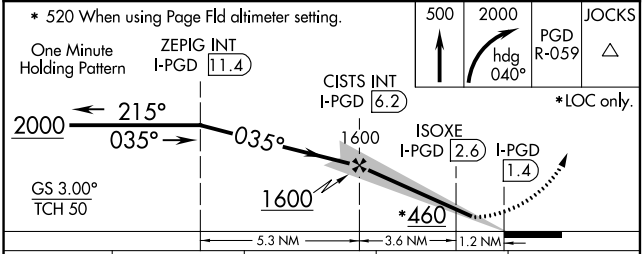
MISSED APPROACH: Climb to 500 then climbing right turn to 2000 on heading 040° and PGD VOR R-059 to JOCKS INT and hold.

ATIS ★ <b>135.675</b>	FORT MYERS APP CON ★ <b>127.05 306.2</b>	PUNTA GORDA TOWER ★ <b>121.0</b> (CTAF) <b>0</b>	GND CON <b>119.55</b>	CLNC DEL <b>119.55</b>	CLNC DEL <b>127.05</b> (When twr closed)	UNICOM <b>122.975</b>
--------------------------	---	---	--------------------------	---------------------------	--	--------------------------



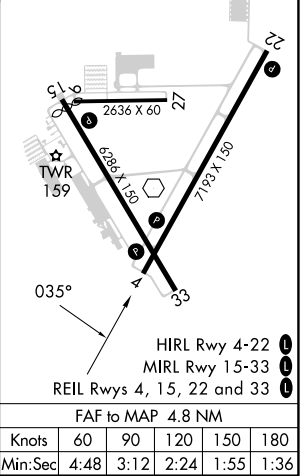
SE-3, 13 JUN 2024 to 11 JUL 2024

SE-3, 13 JUN 2024 to 11 JUL 2024



ELEV 26	D	TDZE 24
---------	---	---------

CATEGORY	A	B	C	D
S-ILS 4		224-3/4	200 (200-3/4)	
S-LOC 4	460-1	436 (500-1)	460-1 1/4	436 (500-1 1/4)
<b>C</b> CIRCLING	460-1 434 (500-1)	580-1 554 (600-1)	600-1 1/2 574 (600-1 1/2)	740-2 1/4 714 (800-2 1/4)
ISOXE FIX MINIMUMS (DME REQUIRED)				
S-LOC 4		380-1	356 (400-1)	
<b>C</b> CIRCLING	460-1 434 (500-1)	580-1 554 (600-1)	600-1 1/2 574 (600-1 1/2)	740-2 1/4 714 (800-2 1/4)



Knots	60	90	120	150	180
Min:Sec	4:48	3:12	2:24	1:55	1:36