

WAAS CH <b>45905</b>	APP CRS <b>215°</b>	Rwy Idg TDZE <b>26</b>	<b>7193</b>
<b>W22A</b>		Apt Elev <b>26</b>	

# RNAV (GPS) RWY 22

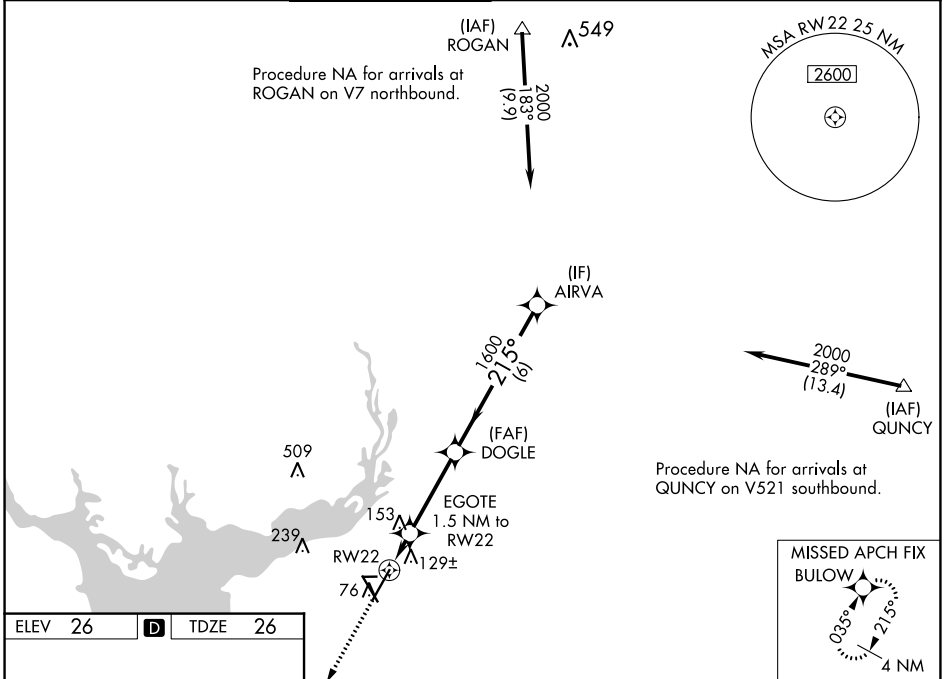
PUNTA GORDA (PGD)

RNP APCH.

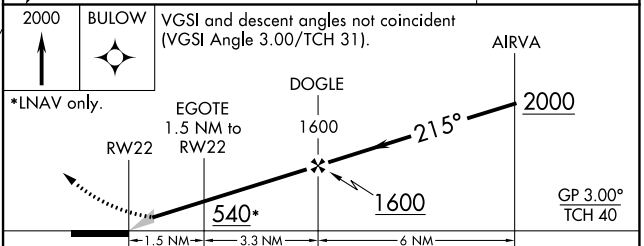
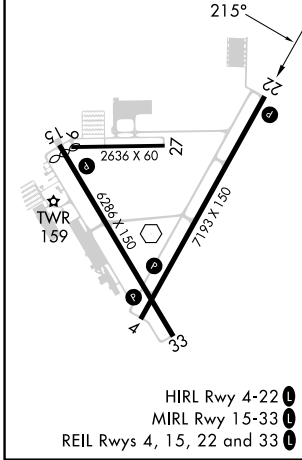
⚠ Baro-VNAV NA when using Page Fld altimeter setting. For uncompensated Baro-VNAV systems, LNAV/VNAV NA below 1°C or above 54°C. When local altimeter setting not received, use Page Fld altimeter setting and increase LPV DA to 276, LNAV/VNAV DA to 360, and all MDAs 60 feet; increase LNAV Cats C and D visibility ¼ SM, and Circling Cats C and D visibility ¼ SM.

MISSED APPROACH: Climb to 2000 direct BULOW and hold.

ATIS ★ <b>135.675</b>	FORT MYERS APP CON ★ <b>127.05 306.2</b>	PUNTA GORDA TOWER ★ <b>121.0 (CTAF) 0</b>	GND CON <b>119.55</b>	CLNC DEL <b>119.55</b>	CLNC DEL <b>127.05</b> (When twr closed)	UNICOM <b>122.975</b>
--------------------------	---	--	--------------------------	---------------------------	--	--------------------------



ELEV 26	<b>D</b>	TDZE 26
---------	----------	---------



CATEGORY	A	B	C	D
LPV DA		226-¾	200 (200-¾)	
LNAV/VNAV DA		310-1	284 (300-1)	
LNAV MDA	420-1	394 (400-1)	420-1½	394 (400-1½)
<b>CIRCLING</b>	460-1 434 (500-1)	580-1 554 (600-1)	600-1½ 574 (600-1½)	740-2¼ 714 (800-2¼)

SE-3, 13 JUN 2024 to 11 JUL 2024

SE-3, 13 JUN 2024 to 11 JUL 2024