

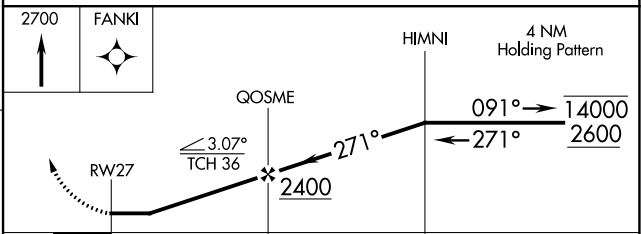
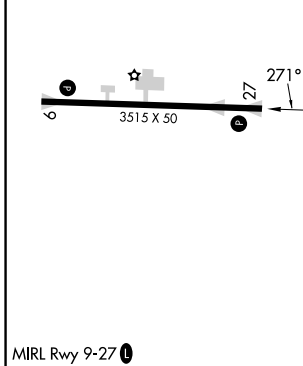
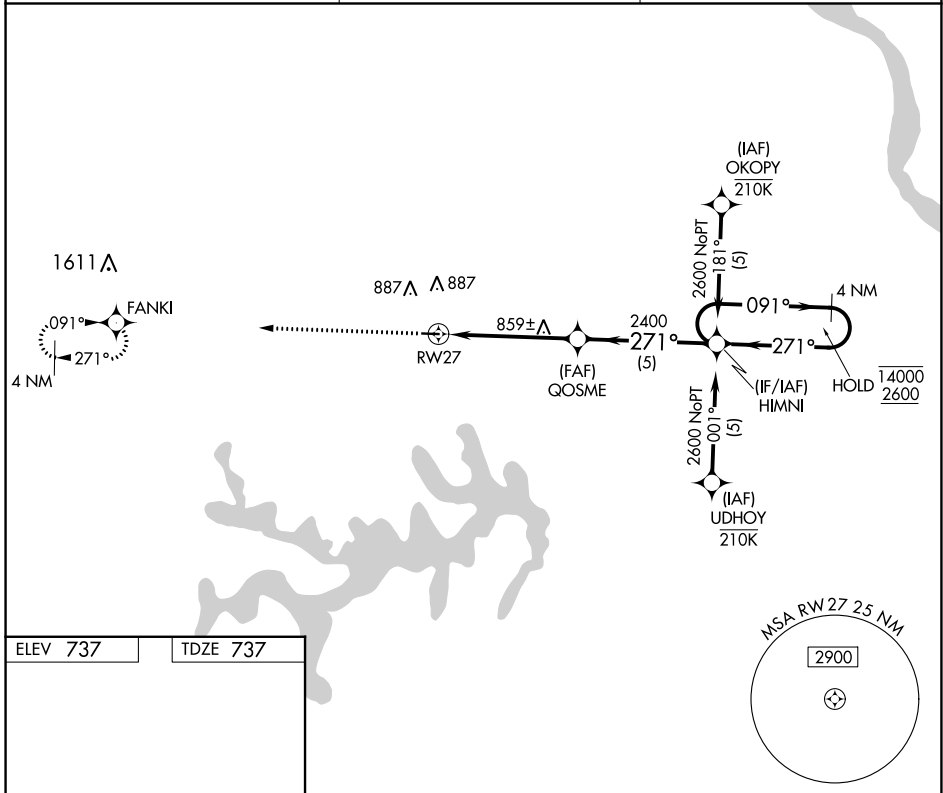
APP CRS	Rwy Idg	3515
271°	TDZE	737
	Apt Elev	737

RNAV (GPS) RWY 27

CPT BEN SMITH AIRFIELD-MONROE CITY (K52)

RNP APCH - GPS.	MISSED APPROACH: Climb to 2700 direct FANKI and hold.
<p>Procedure NA at night. Rwy 27 helicopter visibility reduction below 1 SM NA. Use Quincy, IL altimeter setting.</p>	

UIN ASOS 121.425	KANSAS CITY CENTER 126.225 317.775	UNICOM 122.8 (CTAF)
----------------------------	--	-------------------------------



CATEGORY	A	B	C	D
LNAV MDA	1240-1	503 (600-1)	1240-1 $\frac{5}{8}$ 503 (600-1 $\frac{5}{8}$)	NA
C CIRCLING	1380-1	643 (700-1)	1380-1 $\frac{3}{4}$ 643 (700-1 $\frac{3}{4}$)	NA

NC-3, 13 JUN 2024 to 11 JUL 2024

NC-3, 13 JUN 2024 to 11 JUL 2024