

APP CRS 247°	Rwy Idg 4033
	TDZE 764
	Apt Elev 775

RNAV (GPS) RWY 25

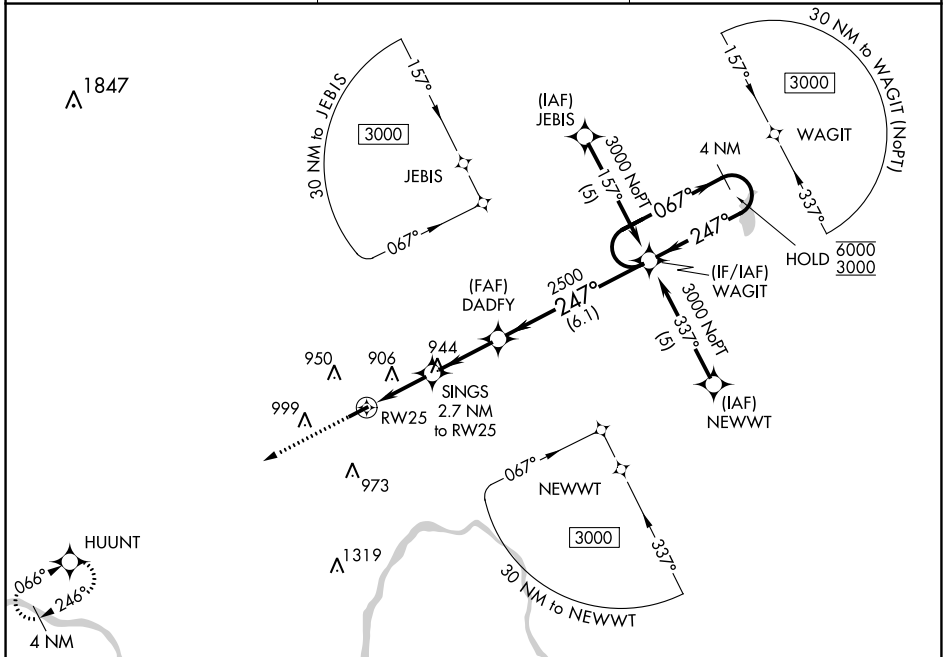
PAUL C MILLER/SPARTA (8D4)

RNP APCH.

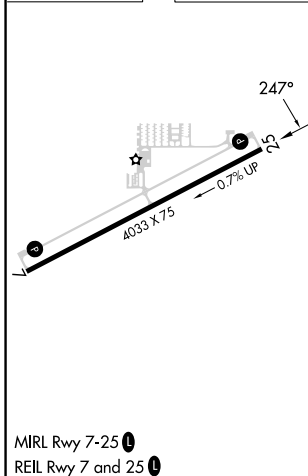
▼ Rwy 25 helicopter visibility reduction below 3/4 SM NA. When local altimeter setting not received, use Grand Rapids altimeter setting. VDP NA when using Grand Rapids
▲ NA

MISSED APPROACH:
Climb to 3000 direct
HUUNT and hold.

AWOS-AV 132.95	GREAT LAKES APP CON * 124.6 257.6	UNICOM 122.8 (CTAF) 0
--------------------------	---	---------------------------------



ELEV 775	TDZE 764
----------	----------



3000	HUUNT	Visual Segment - Obstacles.	4 NM	4 NM
			4 NM	Holding Pattern
		SINGS 2.7 NM to RW25	DADFY	WAGIT
		1.2 NM to RW25	2500	067° → 6000 ← 247° 3000
		1.2 NM	1.5 NM	2.6 NM
				6.1 NM

CATEGORY	A	B	C	D
LNAV MDA	1240-1	476 (500-1)		NA
CIRCLING	1300-1 525 (600-1)	1340-1 565 (600-1)		NA

EC-1, 13 JUN 2024 to 11 JUL 2024

EC-1, 13 JUN 2024 to 11 JUL 2024