

| | | |
|-------------|----------|-------------|
| APP CRS | Rwy Idg | 4033 |
| 066° | TDZE | 775 |
| | Apt Elev | 775 |

RNAV (GPS) RWY 7

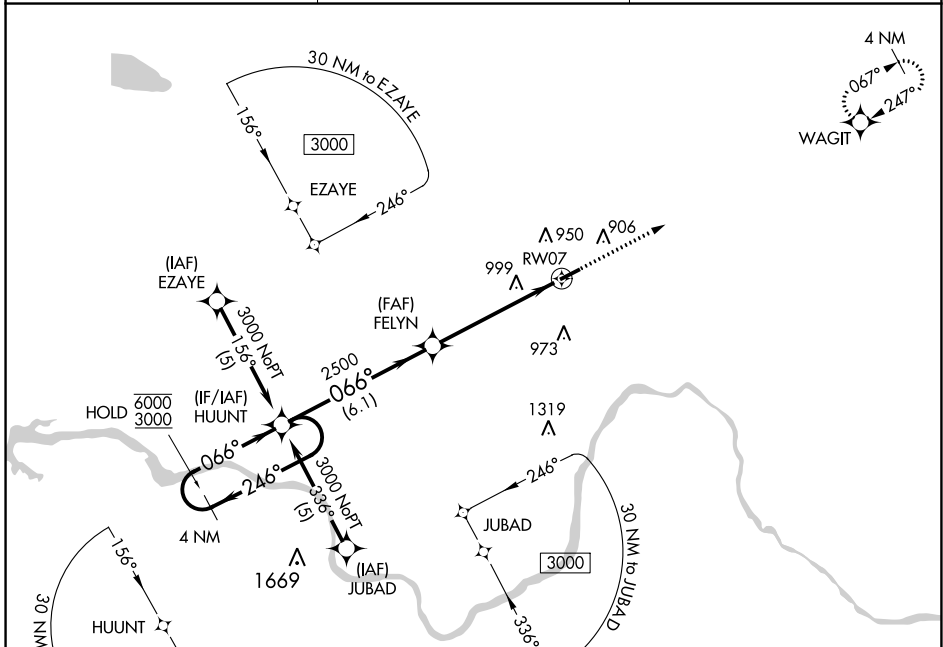
PAUL C MILLER/SPARTA (8D4)

RNP APCH:

▼ Rwy 7 helicopter visibility reduction below 3/4 SM NA. When local altimeter setting not received, use Grand Rapids altimeter setting. VDP NA when using Grand Rapids altimeter setting.
▲NA

MISSED APPROACH: Climb to 3000 direct WAGIT and hold.

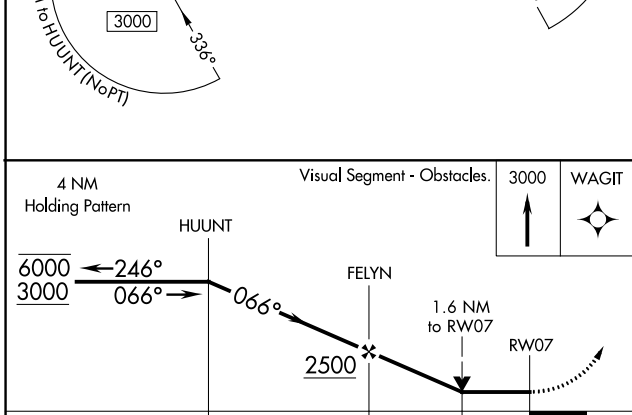
| | | |
|--------------------------|---|---------------------------------|
| AWOS-AV 132.95 | GREAT LAKES APP CON * 124.6 257.6 | UNICOM 122.8 (CTAF) 0 |
|--------------------------|---|---------------------------------|



EC-1, 13 JUN 2024 to 11 JUL 2024

EC-1, 13 JUN 2024 to 11 JUL 2024

| | |
|----------|----------|
| ELEV 775 | TDZE 775 |
|----------|----------|



| CATEGORY | A | B | C | D |
|-----------------|--------|-------------|---|----|
| LNAV MDA | 1380-1 | 605 (700-1) | | NA |
| CIRCLING | 1380-1 | 605 (700-1) | | NA |

MIRL Rwy 7-25 **0**
 REIL Rwy 7 and 25 **0**